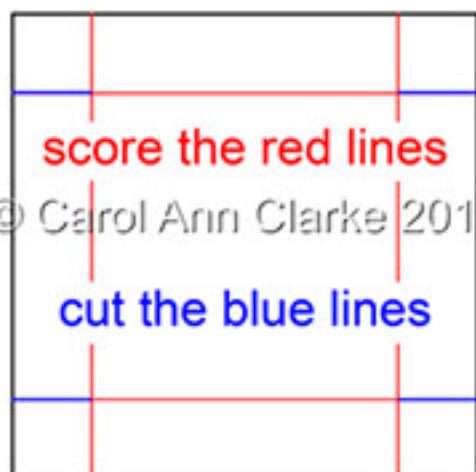


3D Slider Box Card Kits

Gorgeous Cards with 3D decoupage where all the elements are separate so you choose where they go and you can make this beautiful card differently every time!! Just pull the tag and a Box Drawer will Slide out as if by magic and it's big enough to hold sweets, chocolate, candles, jewellery or other small gifts too!



3D Slider Box Card Kits



Before cutting out use a ruler and scoring tool to score the fold lines on sheets where marked

Use the diagram to the left to see where to score and cut the box lid and base.

Laminate the long tag to a piece of plain cardstock to strengthen it.

Cut out all pieces.

Fold and crease all score lines using a bone folder.

Take the card back and fold as shown on the left, to create a W shape when viewed from the side add double sides tape to the glue flap where shown in blue on the photo

Take the front and add double sides tape to the glue flap where shown in blue on the photo

Add the front to the reverse of the back, lining up the edges



3D Slider Box Card Kits



Open up the card front and fold up the W folds we made earlier so you have the glue flap with double sided tape at the bottom. The double sided tape we added earlier is marked in blue on the photo



Fold the front back down and adhere to the double sided tape. Your card will now look like the right hand photo when viewed from the side.



Take the drawer and add double sided tape to the 4 small corner panels. I have marked these in blue on the photo



Fold up the shorter ends and use the small panels to create the corners of your drawer

3D Slider Box Card Kits



© Carol Ann Clarke 2010



© Carol Ann Clarke 2010



© Carol Ann Clarke 2010



© Carol Ann Clarke 2010

Take the Box Sleeve. Cut a piece of plastic or cellophane 1" x 11" and wrap it around the box sleeve locating it in the recessed areas on either side. Use a small piece of double sided tape and adhere the plastic only to itself and not the sleeve. I like to use the clear plastic from a card presentation bag, but I'm showing the placement of this using with plastic cut from a carrier bag. Make sure the join is on the left as shown in blue on the photo

Add a small piece of double sided tape to the base of right side of the long tag. Punch the hole where marked and add a ribbon pull. Place right side down over the plastic lining up the top of the tag with the right hand side of the sleeve. Adhere the tag only to the plastic and not the slider.

Keeping the tag on the right turn over and add a small piece of double sided tape to the right hand side of the plastic where shown in blue on the photo. Do not adhere it to the slider. I have now exchanged the white plastic for the clear plastic. This makes it almost invisible on your finished card

3D Slider Box Card Kits



Add your box drawer and centering it on the sleeve adhere it to the double sided tape we added in the last step.



Fold up the sleeve along the score lines. Add double sided tape to the glue flap where shown in blue on the photo



Adhere the sleeve around the box drawer



Turn over and add narrow double sided tape to the outer edges where shown in blue on the photo. Make sure this is only on the sleeve and does not touch or go over the tag or the plastic.

3D Slider Box Card Kits



Adhere to the front of your card, lining up along the bottom edge. Your card will now look like the left photo when viewed from the front and the right photo when viewed from the side



Check that your box will slide. A gentle pull on the ribbon that you added to the tag will magically make the box open on the left! If for any reason yours doesn't then go back a few pages and check that the join in the plastic is in the same place as mine and that the double sided tape you added to the tag, box and slider are not touching anything they're not supposed to.



Fold and adhere the decoupage boxes to create 2 long tubes. Cut a piece that is just shorter than the width of your card and adding double sided tape to 2 adjoining sides adhere to the top of the slider sleeve and the card front.



Cut a smaller piece of decoupage box, add double sided tape to 2 opposite sides and adhere towards the top on the reverse side of decoupage layer 1. Add double sided tape along the base of this layer where shown in blue on the photo. adhere to the front of your card

3D Slider Box Card Kits



Decide where you'd like your decoupage and cut decoupage boxes to fit. Add them to the front as before. I have added 2 butterflies to the garden gate too!



Add decoupage boxes higher up on the larger pieces, making sure they will not be above the 1st layer of decoupage. The smaller pieces do not require further boxes. Add double sided tape to the bottom of the pieces as before. I have marked this in blue on the photo



Add the decoupage to your card



Your card will now look like the left photo from the front and like the right photo from the side

3D Slider Box Card Kits



Make the box lid and base in the same way as the drawer we made earlier. Add double sided tape to the 4 small corner panels. I have marked these in blue on the photo



Fold up the sides and use the small panels to create the corners of your box.



Make your box base in the same way

Your card will now fit into it's matching box and is ready to be sent



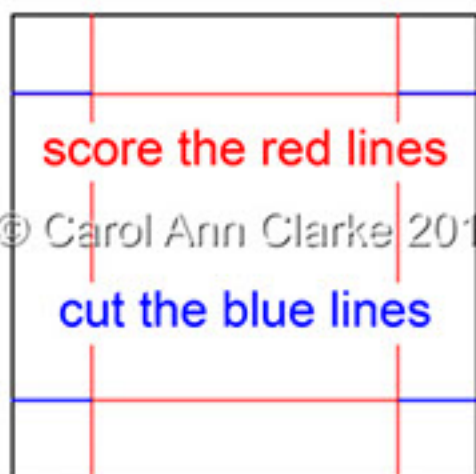
Fill your drawer with sweets, chocolate, candles or small gifts



3D Slider Box Card Kits

For those of you who sell your cards I have designed a clear acetate lid to fit your card and box for a professional way to display your cards and here are the instructions for making it.

Cut a piece of clear acetate that measures 7 3/4" x 7 3/4" and score 1.25" from each side. Make sure you burnish your score lines well with a bone folder to make sure your acetate will fold nicely. This is made in almost the same way as your box lid. Cut up to the score lines as shown in blue on the diagram below.



Instead of double sided tape adhere the corners with small glue dots and cover these up with a small crystals on the outside



To display place your card in the box, place the box lid upside down over the base and the acetate lid over the top.

I decorated the box using the matching gift tag, ribbon and a coordinating button

3D Slider Box Card Kits



Your finished Slider Box Card with box

Card and Box with a clear acetate lid



Your slider box will hold 2 chocolate bars, 6 tea light candles or a small gift



There are lots more to choose from:-



3D Cupcake Box Mini Kits:-



3D Xmas Treat Boxes/Decorations:-



3D Shaped Top Treat Box:-



3D Frame Cards with gift box sets:-



3D Shop Gift Card Holders:-



3D Xmas Gift Bags:-



Xmas Cards in a Box:-



3D Perpetual Calendar Cube Desk Sets:-



3D Christmas Gift Sets:-



3D Open the Christmas Door Kits:-



3D Animated Merry Carollers:-



3D Xmas Open View Card Kits:-



3D Pop Out Christmas Words Kits:-



Bookmark Calendar Fold Card Kits:-



3D Sleeps Till Santa Animated Card Kits:-

