

Tutorial For My Double Rounded Aperture Pillow Cards

© 2011 June Harrop www.craftsuprint.com

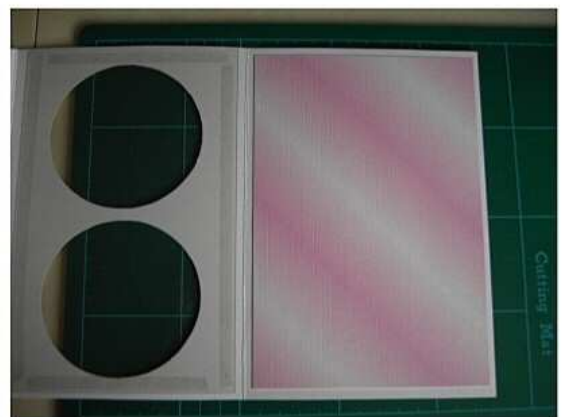
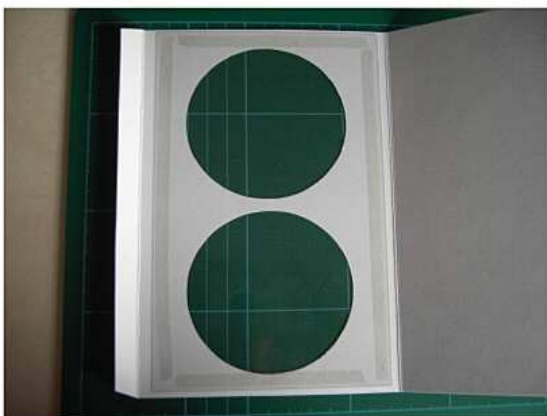
Page 1



Print off the sheets and cut out all the pieces. Take the main card piece and carefully score and fold down the centre and along the glue edge.



Now you need to cut out the circles. MY TIP OF THE CENTURY:- Buy a pair of curved nail scissors. They make cutting out circles a doddle, but any small scissors will do.



Now you need to cut a piece of acetate that fits over the round apertures on the inside. Stick down with double sided tape. Next cut to size the backing paper and fix onto the inside back of the main card base.

Tutorial For My Double Rounded Aperture Pillow Cards

© 2011 June Harrop www.craftsuprint.com

Page 2

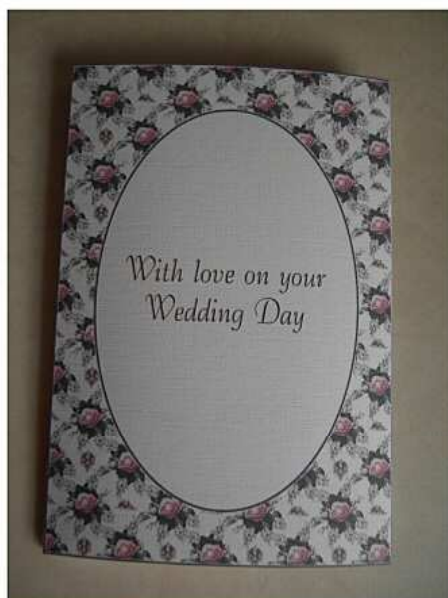


Next take the small pieces and decoupage them. You can then add anything you like to enhance them such as peel offs, gems, glitter etc. You then need to place them onto the backing making sure they are lined up in the aperture windows.



Finally you need to stick the edge to the inside backing of the card. I use double sided tape and

glue gel together so i have movement to give me time to get the edges level. I also put a couple of paper clips on until the glue dries. Once the card is stuck it will have a natural curve that will allow it to stand freely.



Tutorial For My Double Rounded Aperture Pillow Cards

© 2011 June Harrop www.craftsuprint.com

Page 3



Take the back and front pieces of the envelope, score and fold.

When i fix the 2 pieces of the envelope together i always find it easier to stick the bottom flap of the back piece of the envelope to the bottom edge of the front piece then just lift up and stick the sides. You may have your own way of doing it i just find this way easier.



And here you have the finished card with matching envelope. Something a bit different. Look out for the other in this range and if you have any questions please do not hesitate to ask me.

Many Thanks

June

xx