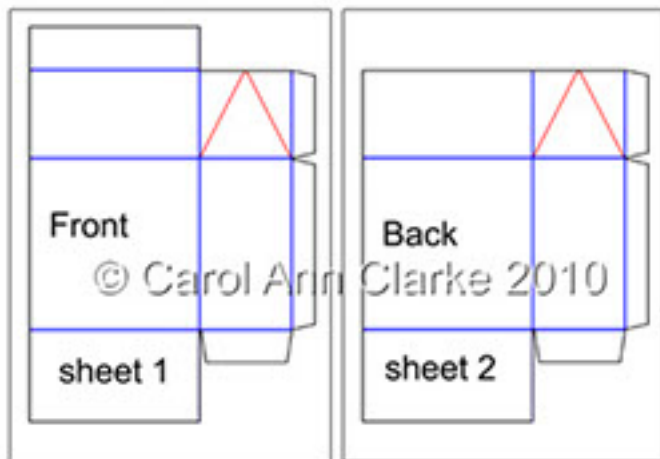


3D Cards in a Mini Milk Carton



For best results print sheets 1 to 4 onto photo paper or good quality cardstock & sheets 5 to 11 onto good quality paper

3D Cards in a Mini Milk Carton



Read these instructions all the way through before making your Gift Box

Before cutting out use a ruler and scoring tool to score the fold lines on sheets where marked. Use the lines at the edges of the sheets to align your ruler

The small black dots on the sheets also need to be joined with score lines. I have marked them in red on the photo.

The red lines denote mountain folds and the blue lines valley folds.

Cut out all pieces.

Fold and crease all the score lines with a bone folder and your box front will look like this now.

The easiest way to crease the diagonal valley folds is to turn over the triangular piece on the right and crease

... and then fold over and crease the other triangle piece, making sure not to crease down into the sides of the box.



3D Cards in a Mini Milk Carton



Crease and fold the back of your box in the same way.

Add double sided tape to the side flaps. I have marked these in red on the photo



Join the front and back of your box making sure to align the sides.

Add double sided tape to the bottom and side flaps as per the photo.

I have marked these in red on the photo

and on the reverse of the front flap I have marked this in blue on the photo



Fold your box in half and adhere to the double sided tape on the side flap we added earlier. making sure to line up the sides



Fold in the 2 small flaps - left photo
fold in the back flap - right photo
Fold on the front flap - bottom photo



3D Cards in a Mini Milk Carton



Your Box will now look like this from the front



and like this from the side



Fold the top flap over towards the back



Continue folding and feed the top flap into the box - left photo
Until your gift box looks like the right photo
If you have any problems feeding the flap in then cut a tiny sliver from the edge of the flap. Make sure it is only a very tiny sliver though as if you remove too much your flap won't stay closed.

Left like this you are able to open and close the box or you could permanently fix it if you wish

3D Cards in a Mini Milk Carton



Your box will look like this from the front



Your Gift Box will now look like this from the back



Make up the cards, envelopes, gift tags and swing tags



Your gift box is large enough to hold lots of cards or a nice gift or two!!

3D Cards in a Mini Milk Carton:-



3D Christmas Top Drawer Cards:-



3D Top Drawer Cards:-



Christmas Cards in a Box:-:-



3D Floral Cards in a Box:-



3D Christmas Gift Sets:-

