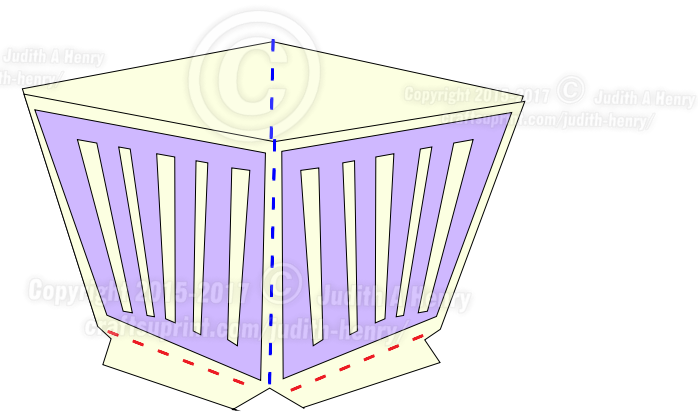
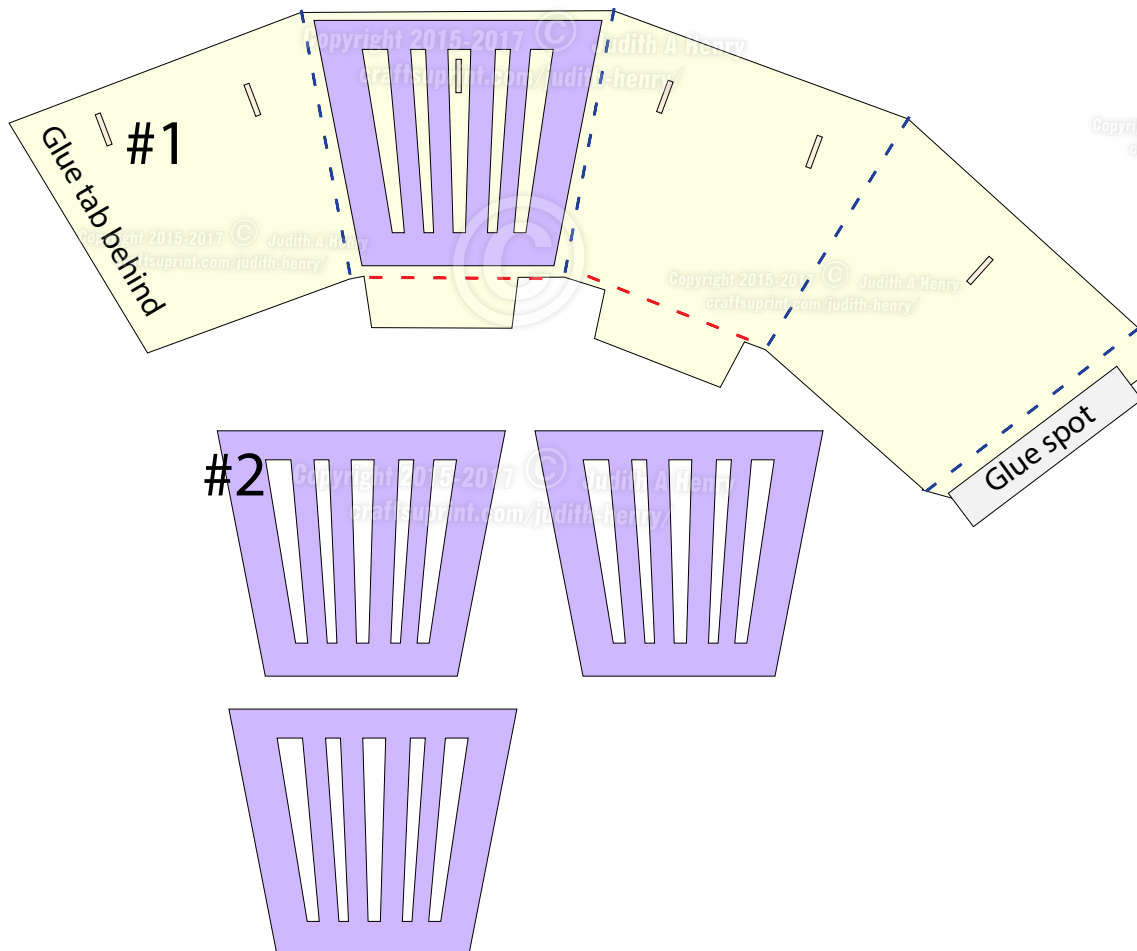


The assembly instruction does not include cutting and embellishing the front cover, inside cover or piecing together the decorative scrapbook paper pieces for the Sassy Cheryl embellishment.

STEP 1 - Cut the Cupcake base from cardstock (#1) and 4 decorative pieces (#2) from scrapbook paper. DO NOT DOTTED CUT FOLD LINES!
Glue the #2 pieces to the #1 base as shown below.

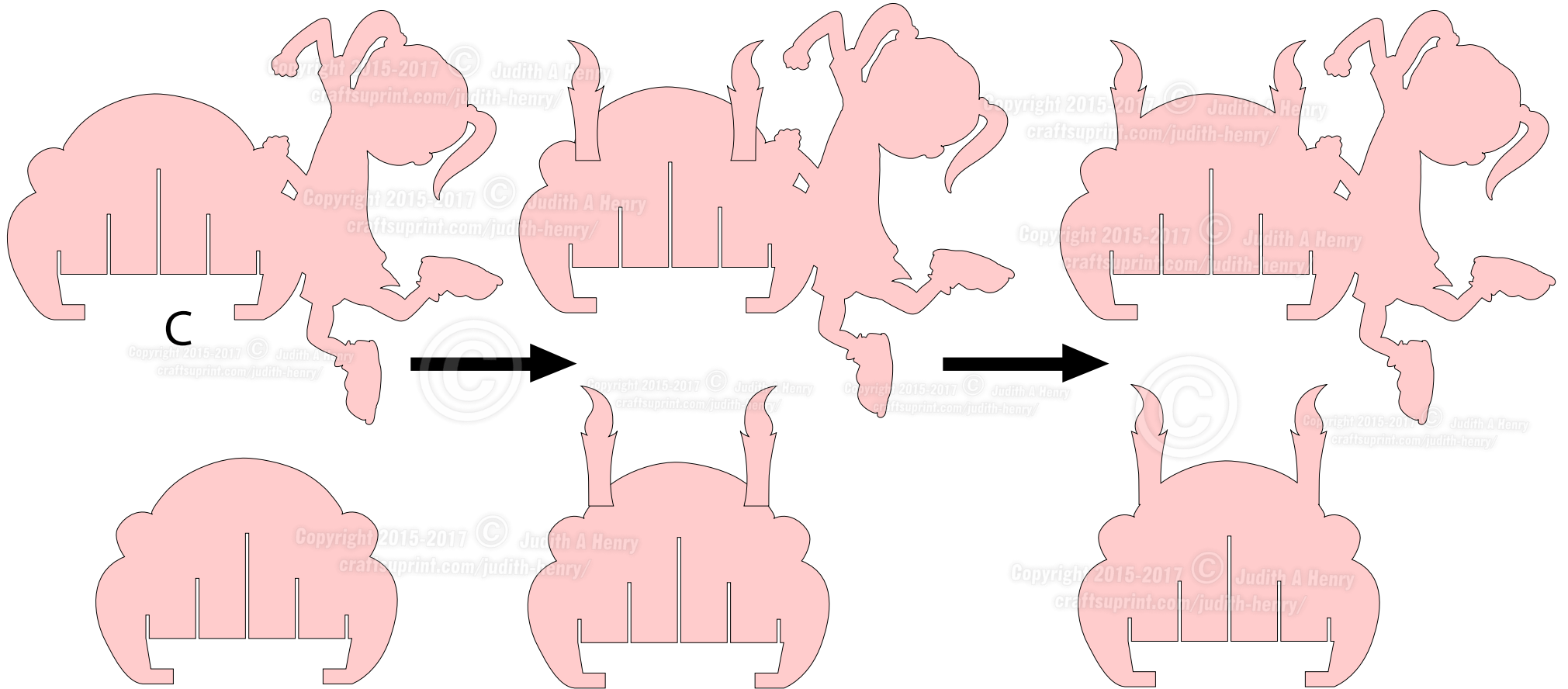
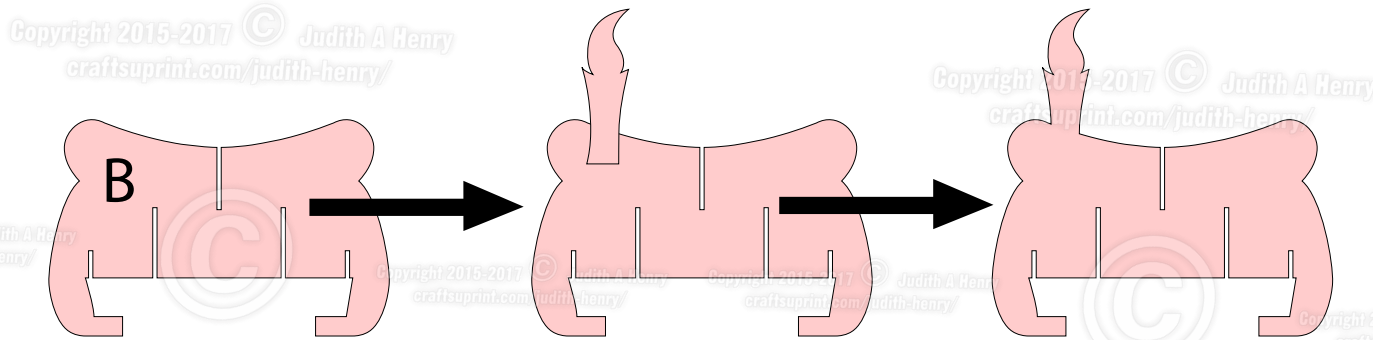
Fold all dotted lines with base tab as valley folds and all other as mountain folds.

Add glue to large tab. Fold the embellished #1 piece wrapping the tab under the matching edge to form a flower pot shape.

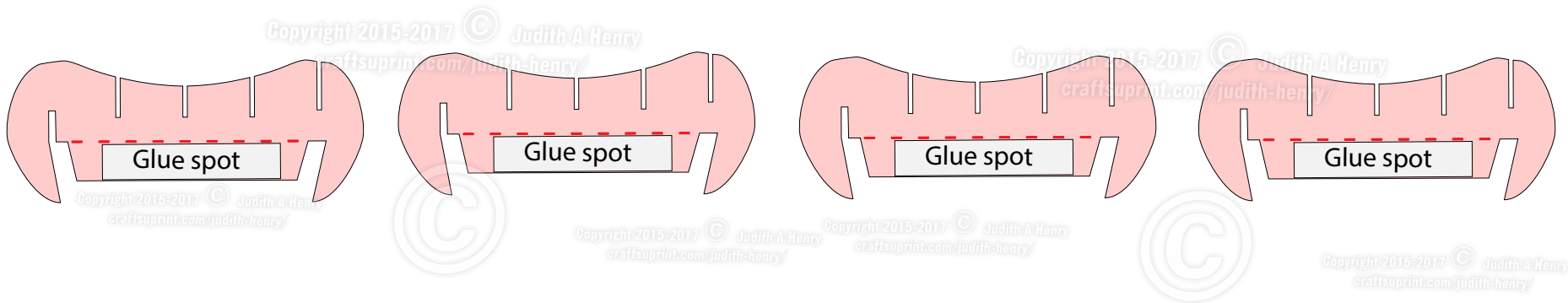


#3 Flower pot shape

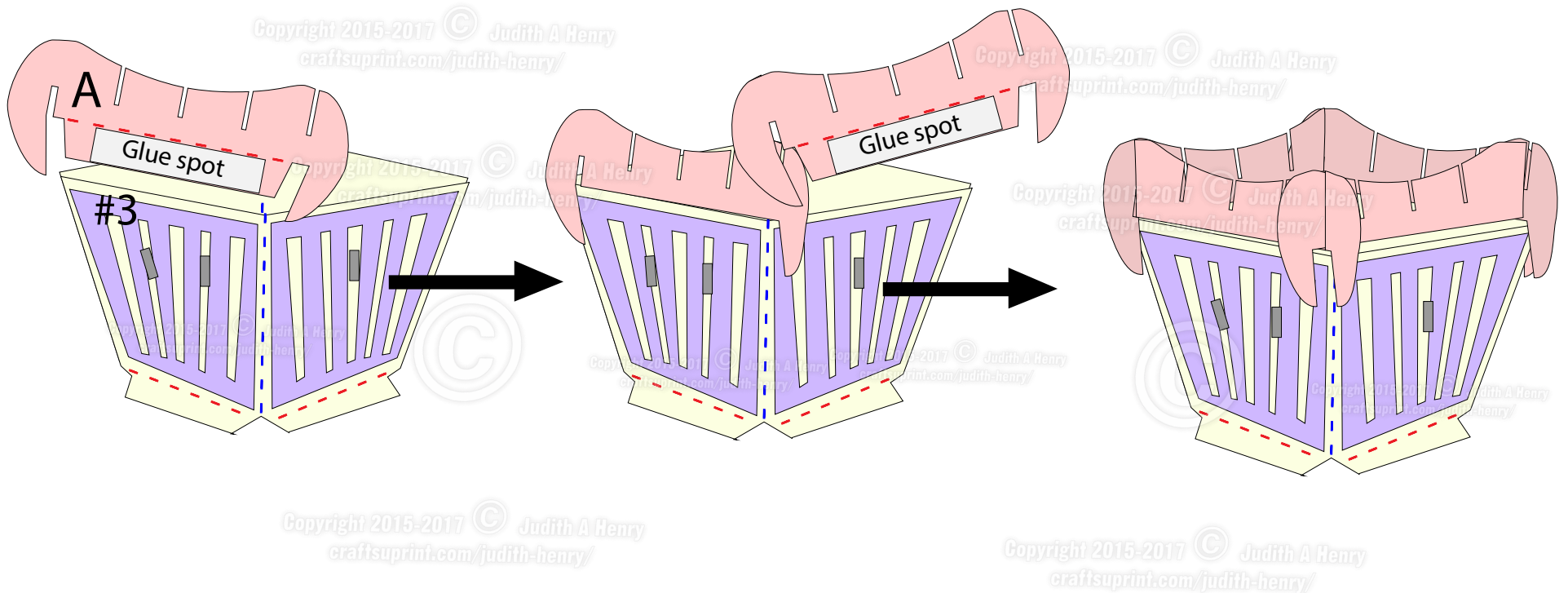
STEP 2 - Optional welding of Candles - Select the cupcake frosting layers you want to Modify. Add candles and weld them together.



STEP 3 - Cut the first row of frosting pieces marked as A. Fold on the dotted line and add glue strips to the tab.



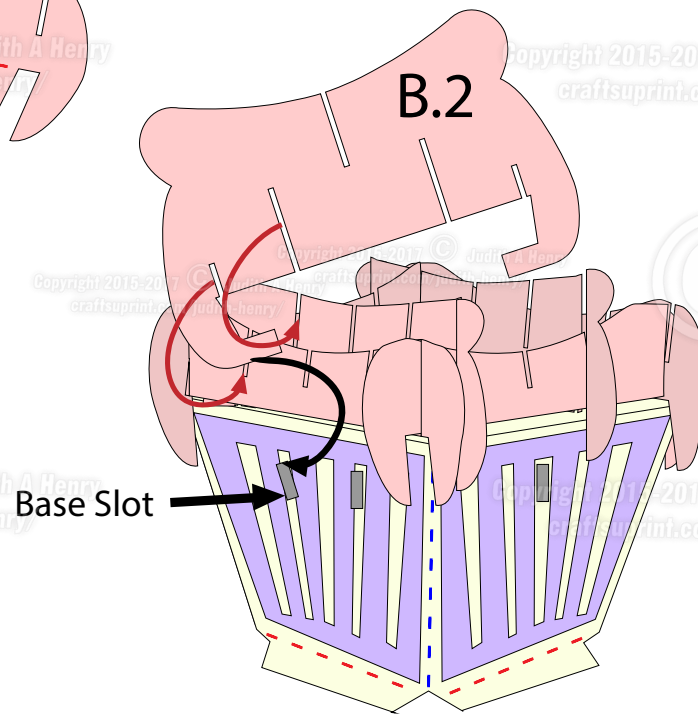
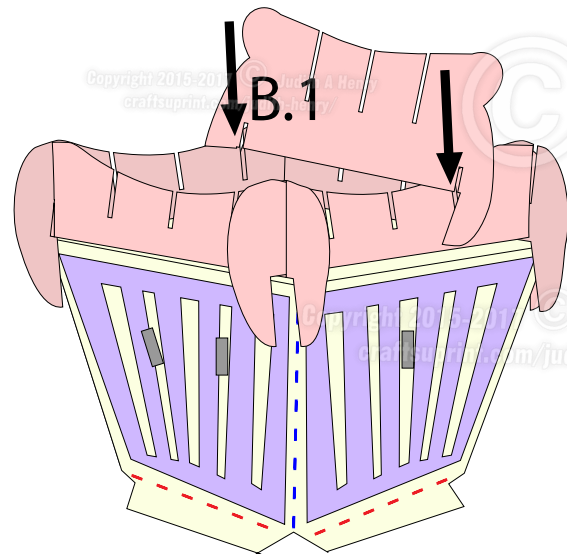
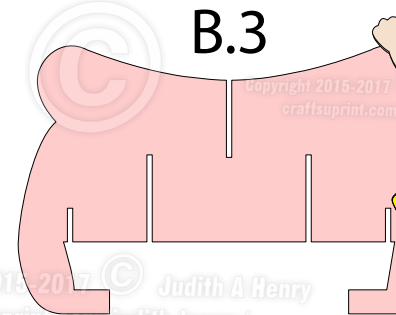
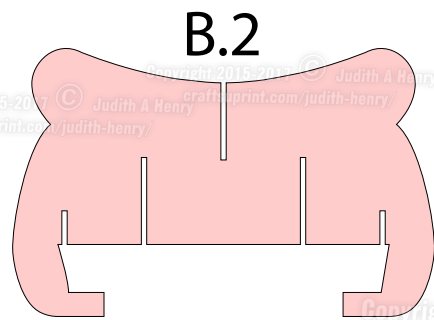
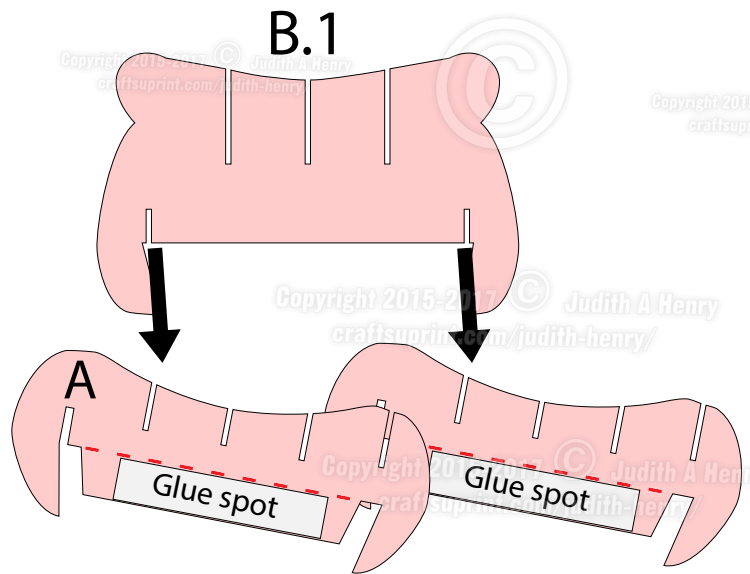
Glue the first A piece to #3. Each A piece will link to the previous piece by sliding the first slot to last slot. Glue each A piece to the cupcake base #3.



STEP 4 - Cut two each of the second row of frosting pieces marked as B.1 and B.2 (optional B.2 and B.3 or any with Candles)
Start with the two B.1 pieces and slide into the A pieces on the cupcake base.
The B.2 piece go in perpendicular to the B.1 piece and bridges both the A and B pieces.
The B.2 and B.3 pieces have hooked edges that are bent and fitted into the Base slot.

Copyright 2015-2017 © Judith A Henry
craftsuprint.com/judith-henry

Copyright 2015-2017 © Judith A Henry
craftsuprint.com/judith-henry

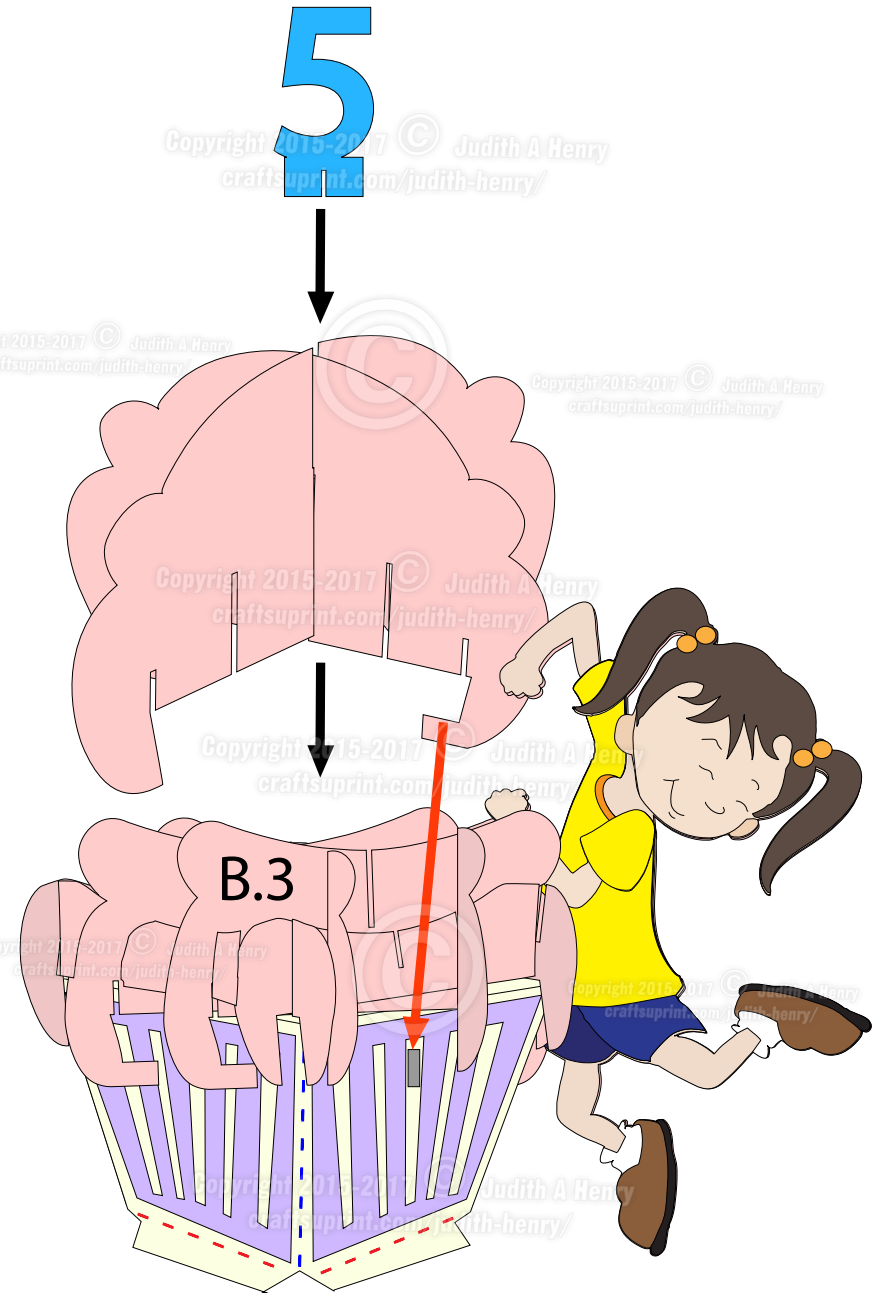
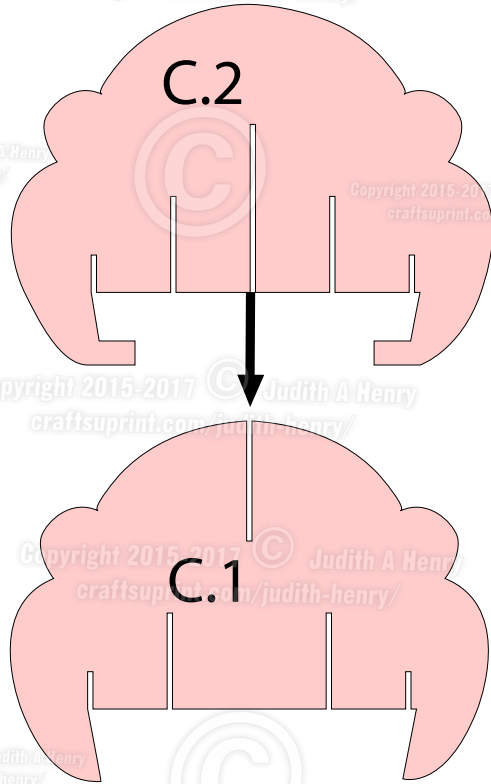


Copyright 2015-2017 © Judith A Henry
craftsuprint.com/judith-henry

Copyright 2015-2017 © Judith A Henry
craftsuprint.com/judith-henry

Copyright 2015-2017 © Judith A Henry
craftsuprint.com/judith-henry

STEP 5- Cut the Third row of frosting pieces marked as C.1 and C.2 (or the Optional welded Pieces with Candles)
The C.2 piece slides perpendicularly to the C.1 piece. This combined piece bridges both the A and B pieces of the cupcake.
The C.2 and piece has a hooked edges that are bent and fitted into the Base slot.
Optionally add a birthday number if a candle was not added



STEP 6 - Attach to the inside of card. Slip tabs into the slots on the inside card base and either glue or tape to underside. Finally glue to the outside cover.

