

V-Fold Snowstorm Popup Card

Assembly Instructions



The Snowstorm Popup Card is a great example of using two V-fold arches to create a dramatic popup mechanism. It is a simple 6 piece mechanism that slips into a folder.

The snowflake pieces are cut from medium weight clear acetate. The snowflakes are cut from your choice of media. I used silver glitter cardstock/paper, holographic adhesive back vinyl and metallic printable foil. Note: I have a tutorial

on a simple method to transfer cut words to a project using wallboard seam tape which was great for the holographic vinyl. <https://www.craftsuprint.com/tutorials/craft-making-tutorials/simple-method-to-transferring-cut-words-to-a-project.cfm>

The back of these material is white and since the base is clear you only need to cut the snowflake sheet once. If you want glitter on both sides cut those pieces twice. The acetate I used was for shrinky dinks. This was a little heavy but worked nicely. The dashed fold lines are score lines which need to be cut at a lower blade setting so it will partially cut the fold. You will not need to use a bone tool to set the fold.

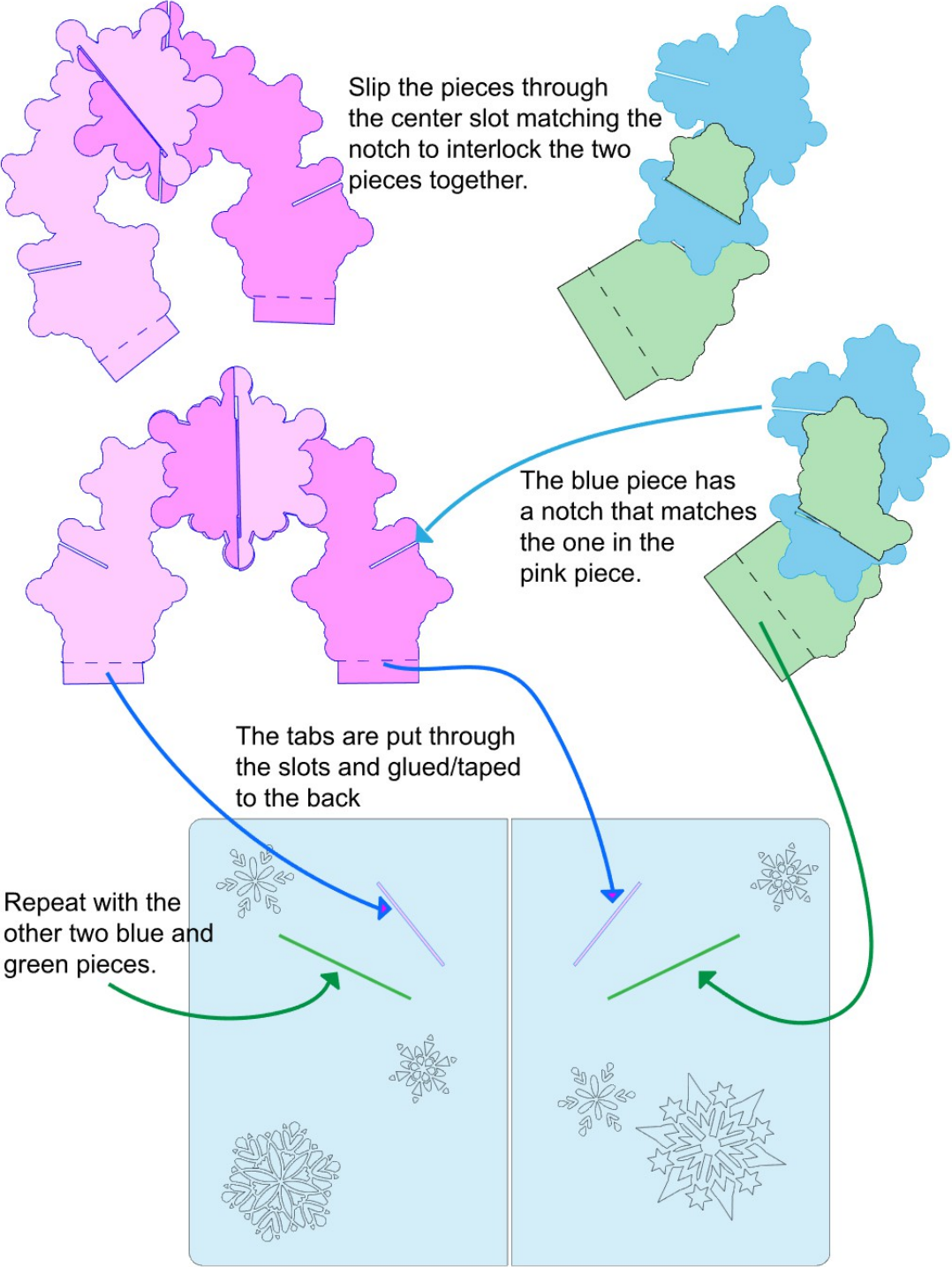
Use the snowflake placement pdf to help arrange the snowflakes on each piece. After they have been attached use an exacto knife to cut open all the slots.

The assembly of the snowflake uses a slot-slide mechanism. Notice the pieces on the sheet below. Notches in one piece make it easier to pull the tongue piece through the slot. The main piece is the single V-fold piece. Assemble and place into the base piece. The other four pieces makes a floating plane between the V-fold and the leg. It also is a slot-slide mechanism. Finally the two floating planes attach by matching the slits together.

The two slits in the base hold the two attached v-folds. They are larger than the tabs that go into it on purpose. Depending on the materials you use this will allow you to place the tabs in their natural positions when folded. Make sure the fold line does line up with the slot and nothing is hanging out of the folder. Glue the tab down but also use tape to seal the slots.

The liner is attached to the underside of each base piece. Then attach the base to the cover. The card should fold flat.

The snowflake base is not cut from cardstock. Use clear medium weight acetate. Glue the snowflakes can be cut from glitter stock, holographic adhesive back vynal or cardstock. Since the base is clear you do not need to put one on each side unless you want to.



Capture my star and submit your creation to the CraftsUPrint.com Gallery.

Thank you for your purchase!
<http://www.craftsuprint.com/judith-henry/>