

Rolling Snowman - Penny Twirling Slider Card

Materials used:

Adhesive back foam sheet for spinner slot

Adhesive back glitter card stock for accent piece and sentiment background

Mat black vinyl for letters

Pattern paper for topper and inside liner

Card stock for snowman and slider box

2 pennies for slider mechanism

1 small circular foam dot ¼ inch diameter

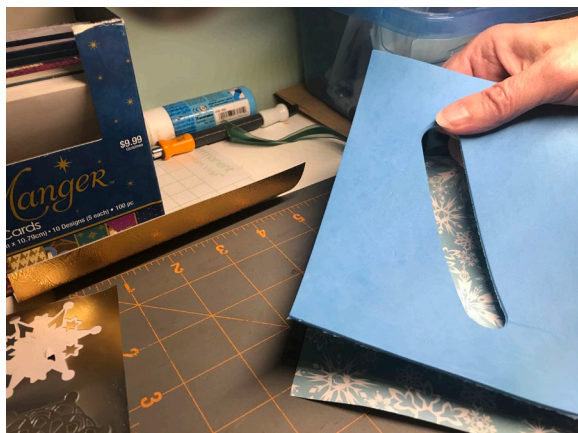
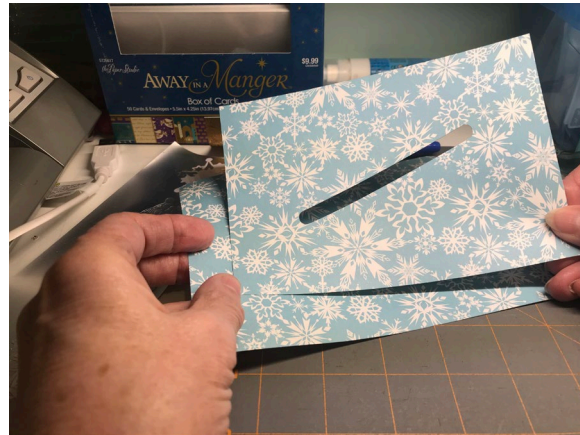
1 large circular foam dot ½ inch diameter

Double sided adhesive

Follow these directions when cutting and assembling

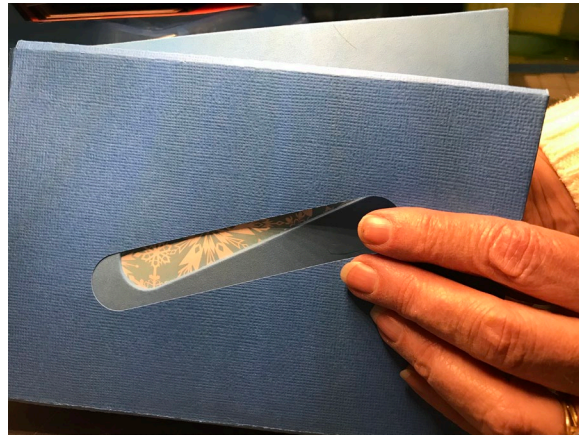
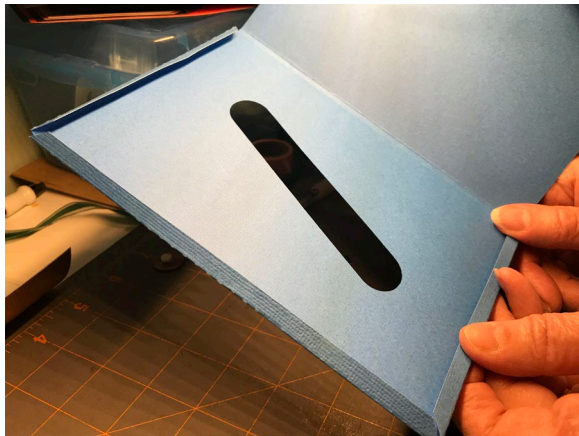
Foam Insert assembly.

Using a deep cut blade and craft a foam sheet, cut out the foam insert. Also pick a patterned piece of paper stock for the optional back liner and topper decorative piece. Attach the foam insert to the back liner piece. The pattern shows through the foam insert slot. Make sure the foam is thick enough so a penny fits in the slot. Optionally foam tape can be used around the slot and edge.



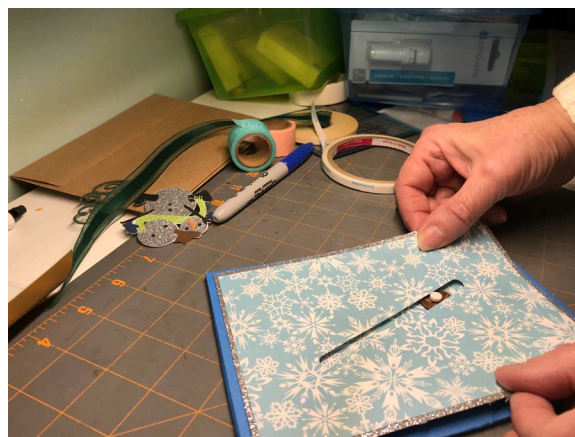
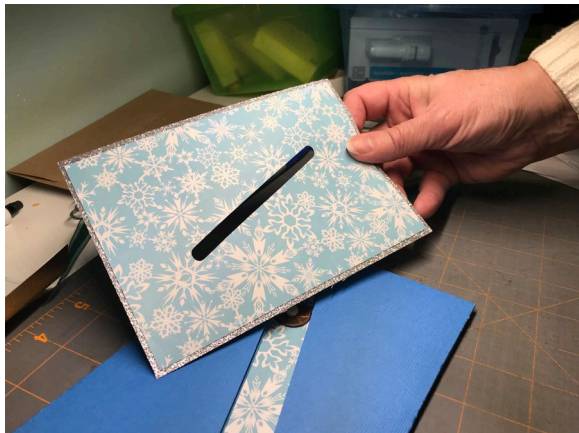
Topper Box Assembly

Cut the topper box from card stock. Set the blade for a score line so it kiss cuts the fold lines. The center opening should match the opening on the foam piece. Using double sided adhesive add to the edges of the foam piece. Fold over the box edge on three sides and attach with the adhesive. Add another layer of adhesive to edge and center to attach the box backing. The foam insert is now enclosed in the box. The box makes a strong platform to add any slider element. Notice the pattern paper showing through the slot will match to decorative layers that will be attached to the top.



Assemble the Slider Mechanism

A penny is used as the base for the slider. Attach the ¼ inch dot to the center of the penny. Position it in the topper box. Assemble any decorative layers with the smaller slot on top. Apply double adhesive around the slot and at the edge. The small foam dot will stick through the decorative layer. This makes the post which runs against the small opening to spin.

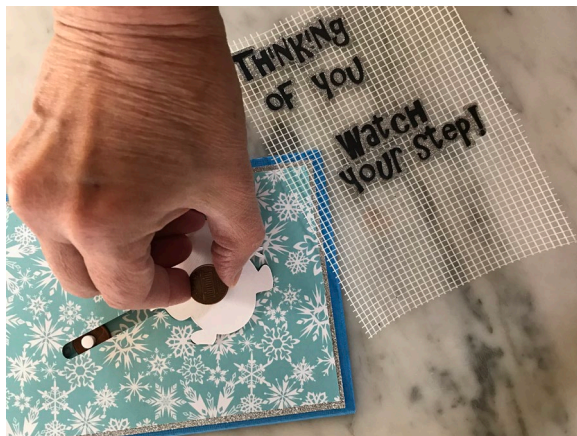


Decorating the topper and assembling the snowman.



The snowman has a layer for the combined element. Do not use white glue to assemble this piece. It causes the snowman to warp. Use adhesive. If you want to make your own design to be the twirling piece make sure you make the base piece by welding the pieces together.

A second penny is used to enclose the mechanism and attach the snowman with a ½ inch dot.



The design is finished with the addition of the sentiment. A 5 x 7 inch card can be added to the back with additional message to the receiver.