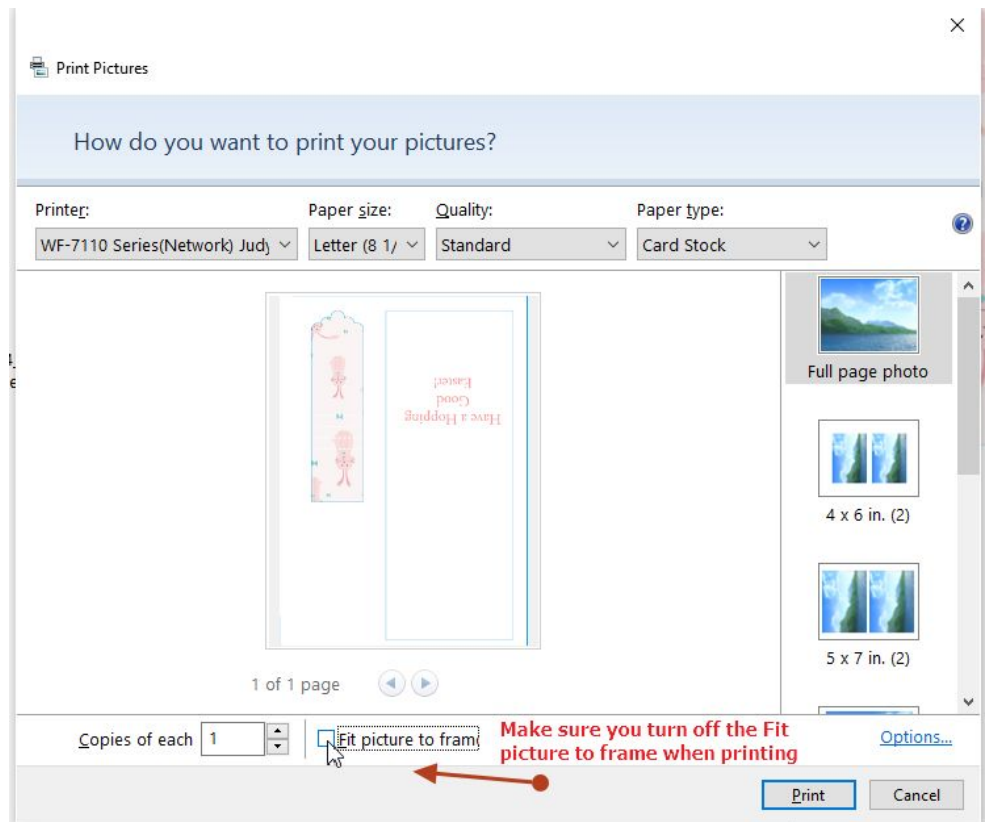


This is the assembly instructions to follow for all of my Waterfall cards. This particular one has 4 pictures that flip over when the tab with the ribbon attached is pulled. It also has printing on both sides giving it a professional looking card. It was designed for an A4 card size. This can be printed on letter size paper with Fit picture to frame turned off. With printing double sided this option is important. I print from my rear paper tray onto cardstock. To print the back I turn it over side to side and put it back into the tray.

Materials you will need:

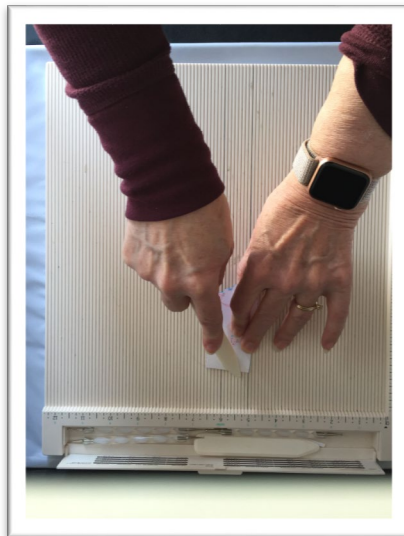
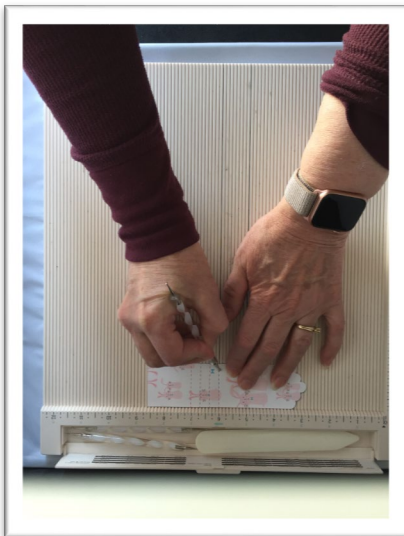
- Printed sheets
- Scissors, scoring accessories
- Rivet punch and ribbon
- double stick tape
- double stick foam tape



The card has a center fold. Score it and use a bone folder for a crisp edge.



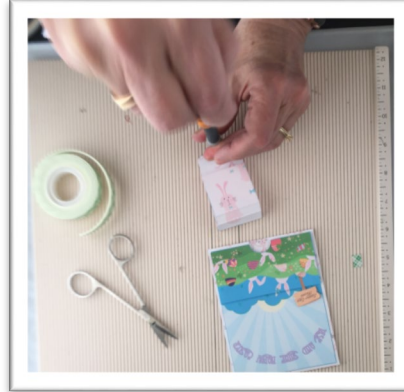
Likewise, the waterfall mechanism has several folds for each layer. Score them and use a bone folder for a crisp edge.



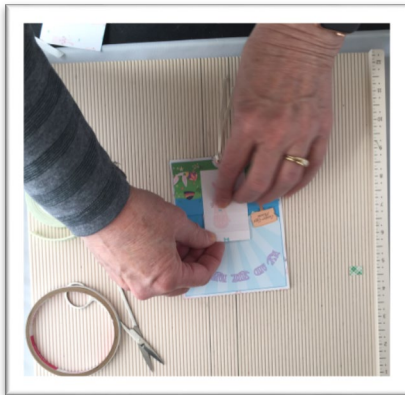
Now add the layers for the front of the card. The pocket for the waterfall mechanism is attached with foam tape.



This includes anything like the sign. This raises the pocket so the waterfall mechanism can be slide behind it. This mechanism needs a ribbon attached to it to help pull it through. I used a hole and rivet punch.



The next step is to fold the piece at the first fold line with all the folds facing you. Slide the unfolded part under the pocket. Attach the bottom square piece to the pocket. On top of this use adhesive to attach the first and smallest piece below the first fold. Each fold then has a progressively larger piece attached to it. Continue for all four pieces



Once the last piece is attached you will have the waterfall ready. Pull the ribbon to expose the secret pictures.



Don't forget to look inside the card for the card's message. This card was purchased at [Craftsuprint.com/Judith Henry/](https://www.craftsuprint.com/JudithHenry/)

Graphic credits: <https://www.vecteezy.com>

146485

Easter Egg Hunt Background

535919

Cute bunny pattern background, Easter pattern for kids

360058 & 359304

Vector Easter Greeting Card Design

359362 & 359334

Vector Easter Illustration