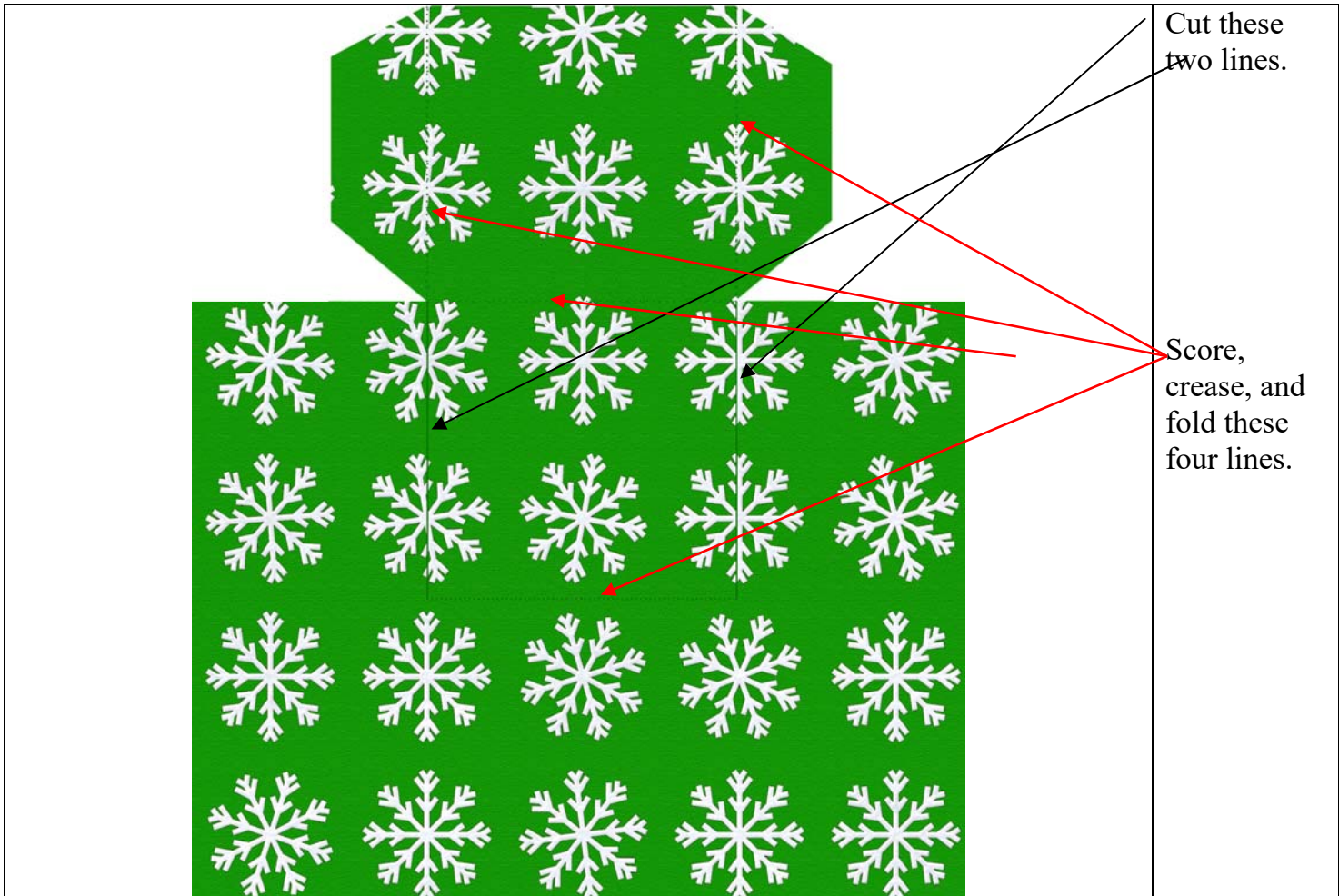


## Stand Up Cards by SuzieQ Kuttables

This tutorial is using my design Christmas Ginger Bread House

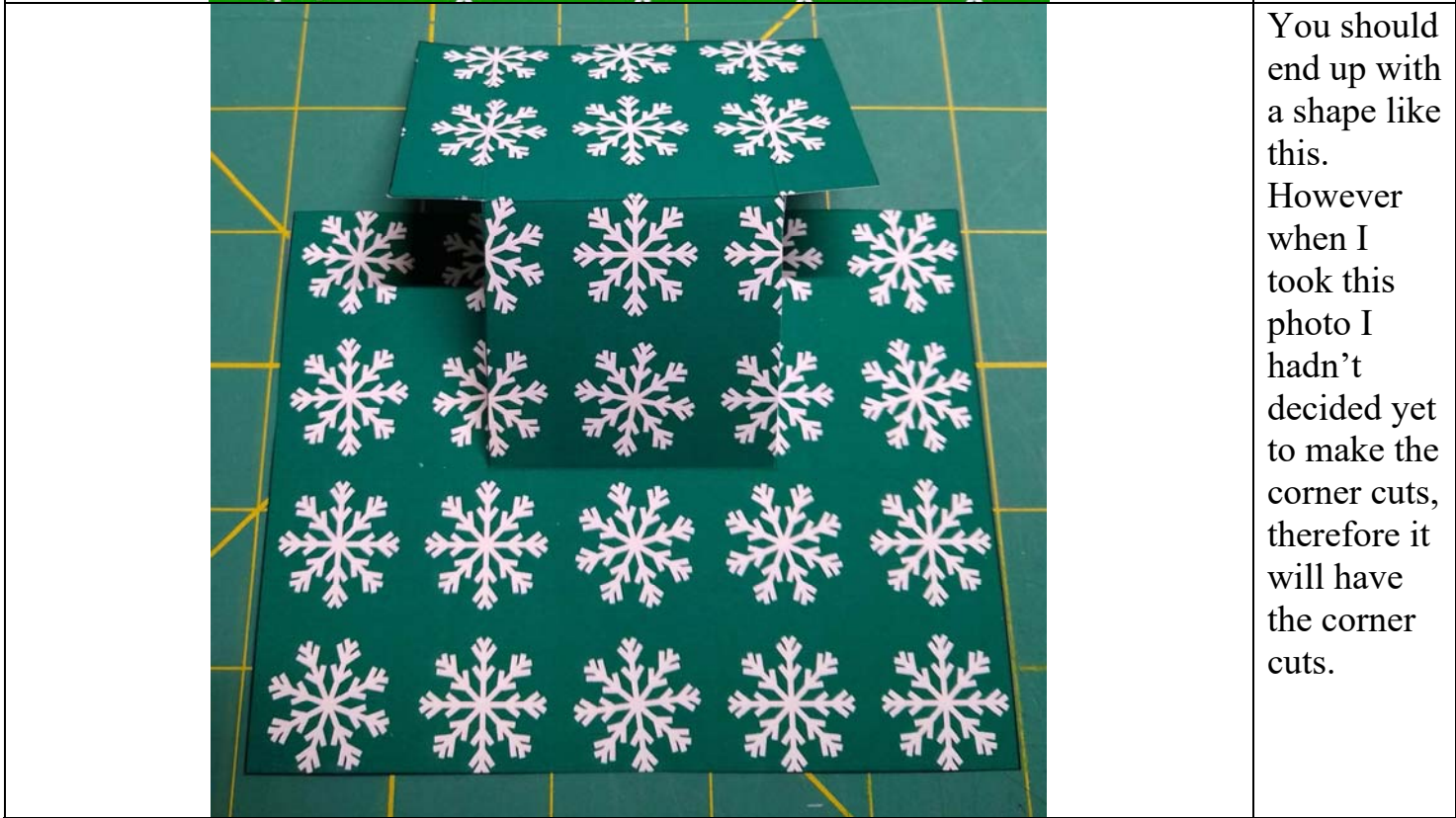


The finished card.

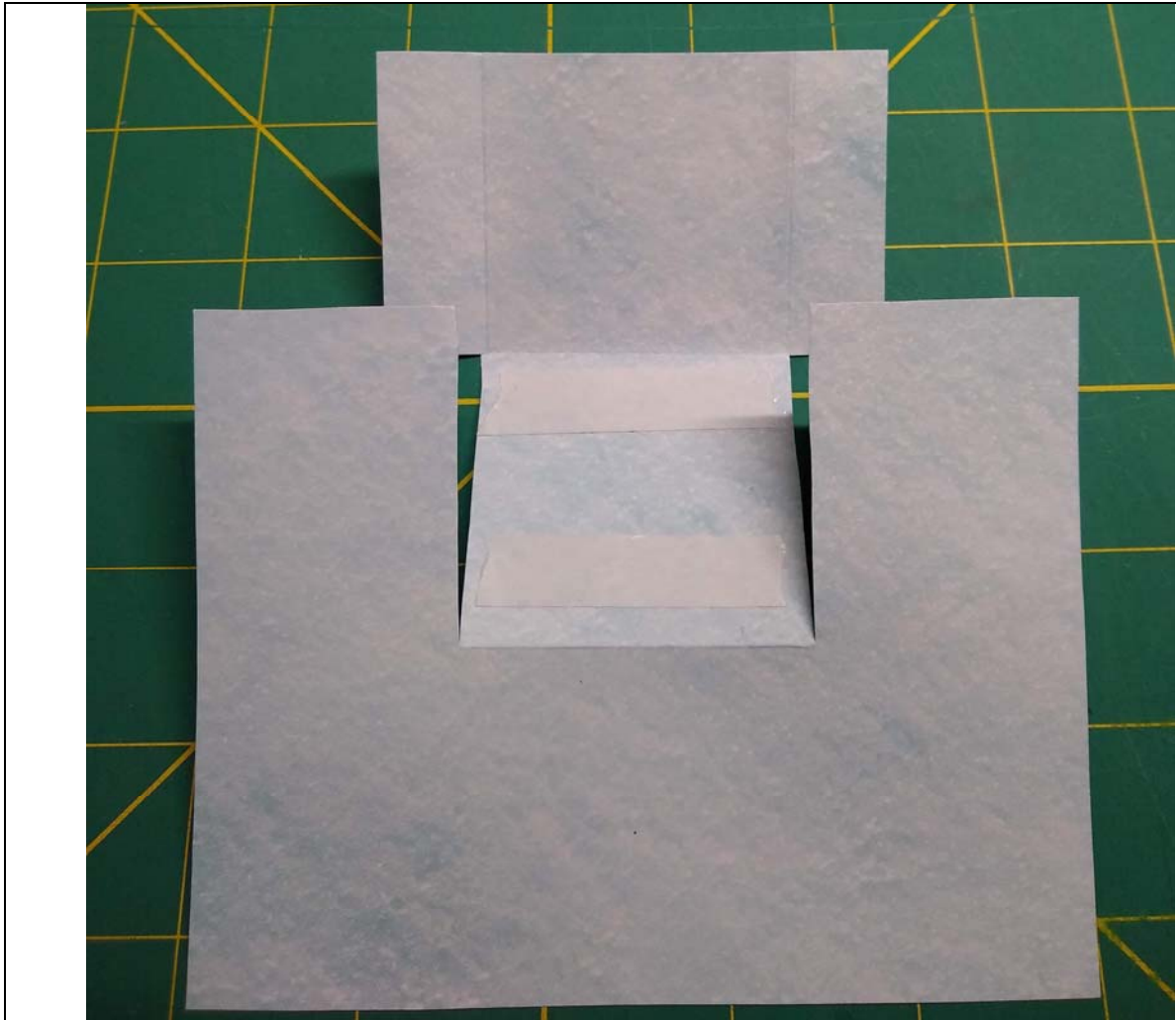


Cut these two lines.

Score, crease, and fold these four lines.

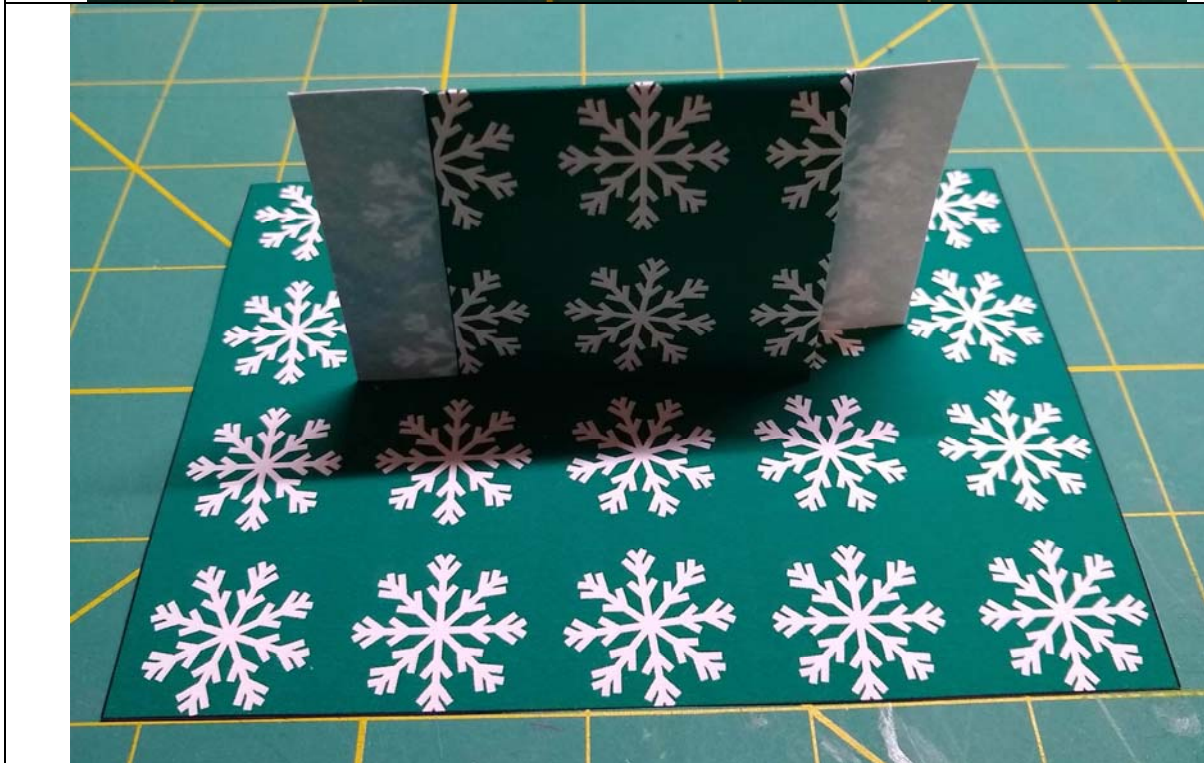


You should end up with a shape like this. However when I took this photo I hadn't decided yet to make the corner cuts, therefore it will have the corner cuts.



Using double stick tape or glue fold the flap part upon itself.

NOTE:  
There is no paper for the back side as shown as I decided it wasn't needed.  
This was a work in progress.



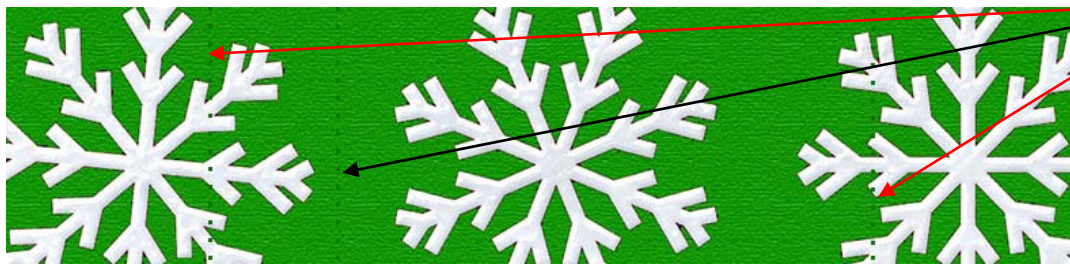
This is the front of the card with the fold lines scored, creased, and folded. And then stuck together. Of course the corner notches will be there.



I wish I hadn't printed the house on paper that had writing on the back.

Decoupage the house.

Attach the house to the flap with double stick tape or glue. The funky looking supports was part of the process. See below regarding the supports. However you should attach them as shown in the photo.



The black arrow line would be a mountain fold and the red ones valley folds.

Not shown is the backing piece if you desire to have the hole in the back not showing.

Score, crease, and fold on the perforated lines. The fold indicated by the black arrow is so the card can fold flat to fit into an envelope.