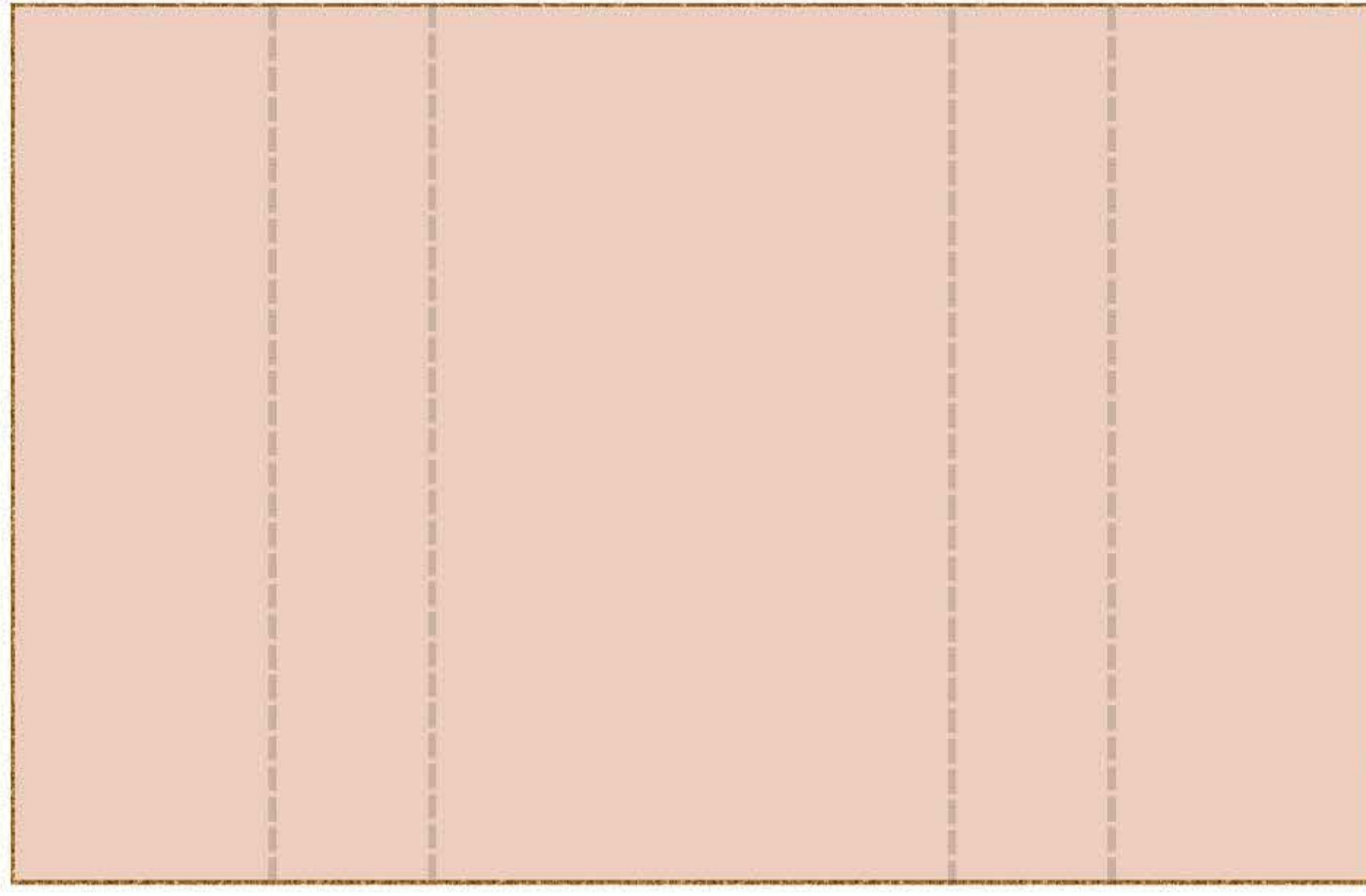
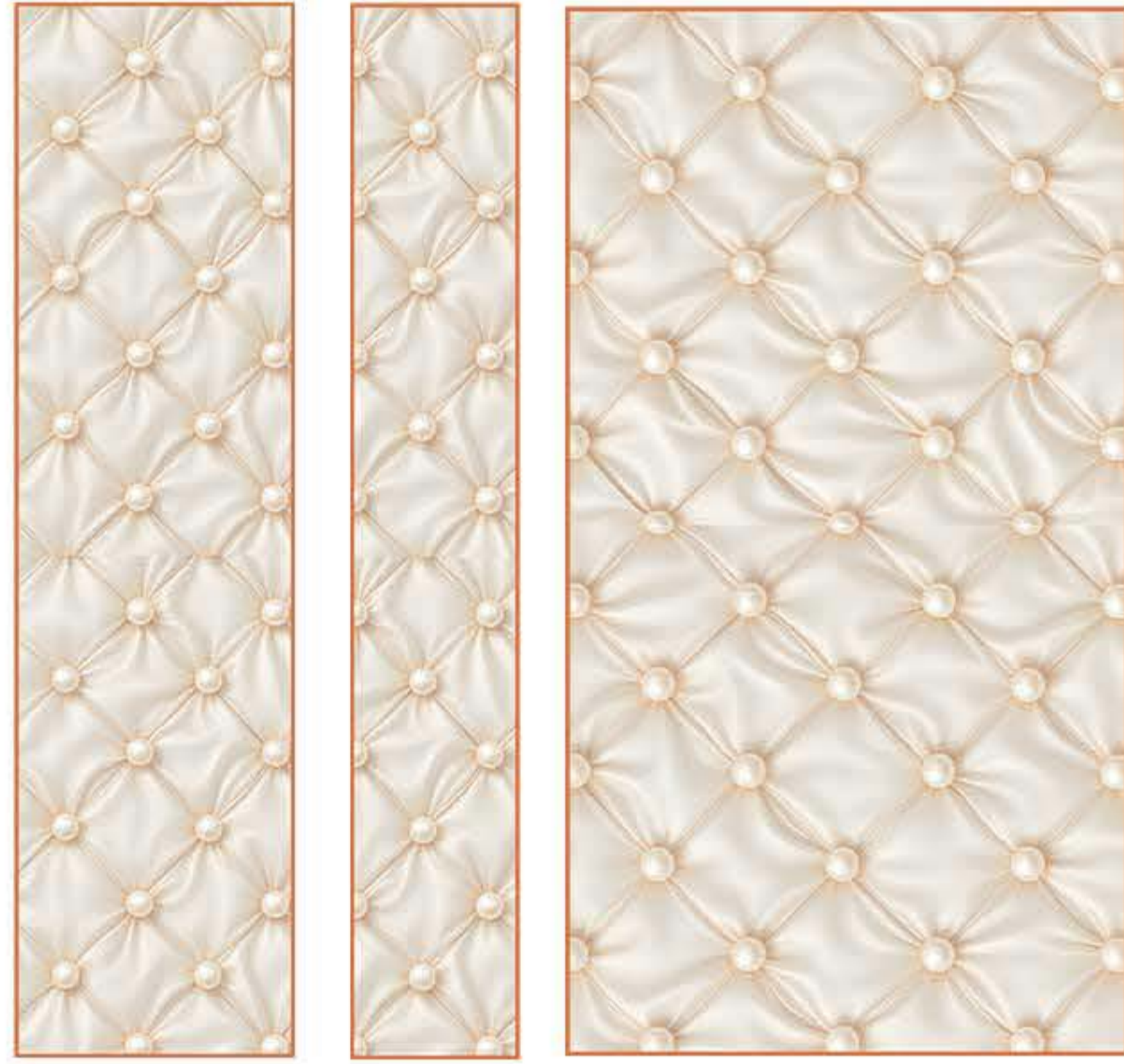


# Center Box Card Instructions



To create the base Starting from left to right. Fold and score the lines. Starting with a mountain fold then a valley fold, then another valley fold and ending with a mountain fold. See Fig.1.

mountain valley valley mountain



Left Front Panel Inner Card Panel Center Card Panel Inner Card Panel Right Front Panel

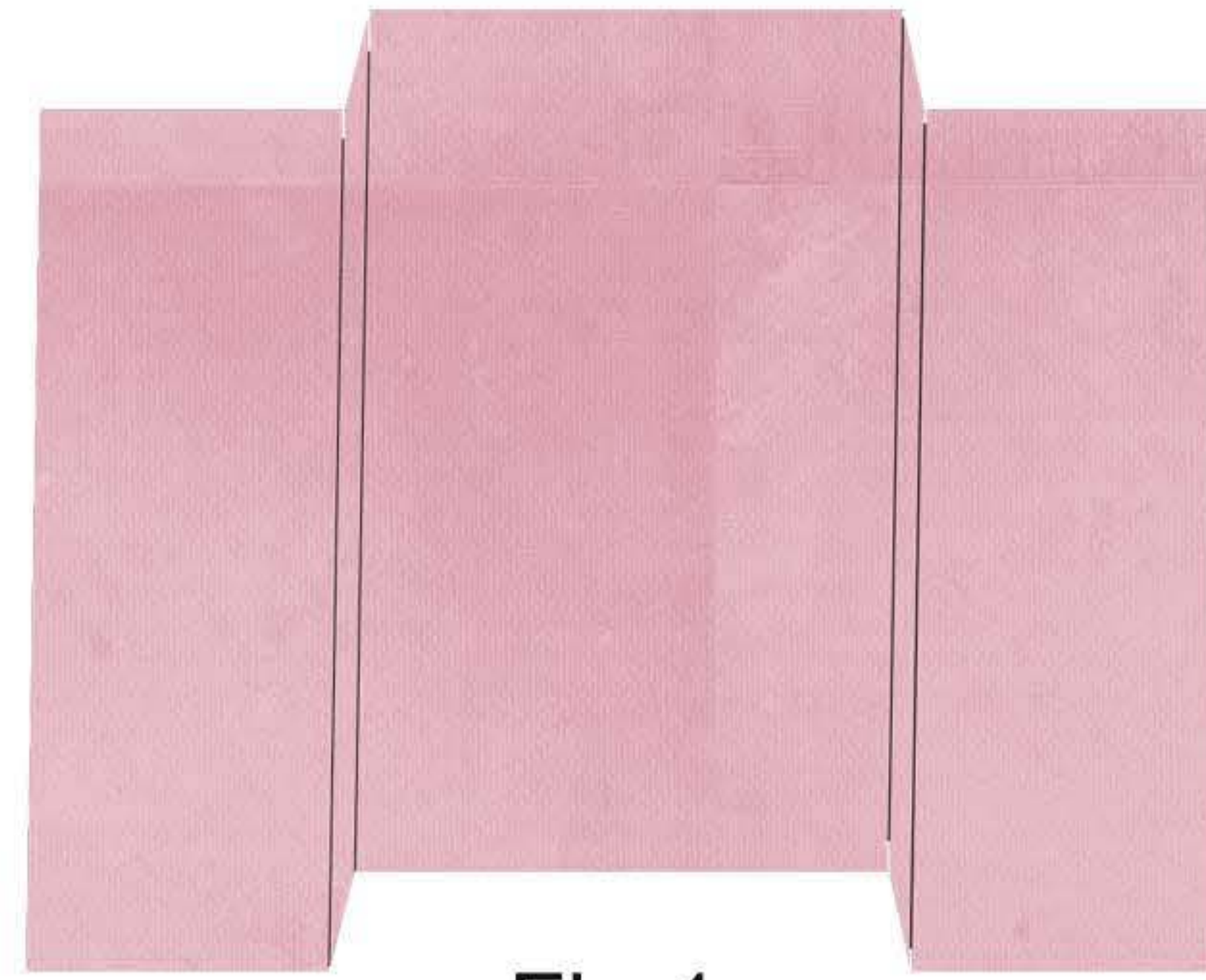


Fig.1.

Glue all panels to Card base. See Fig 2.

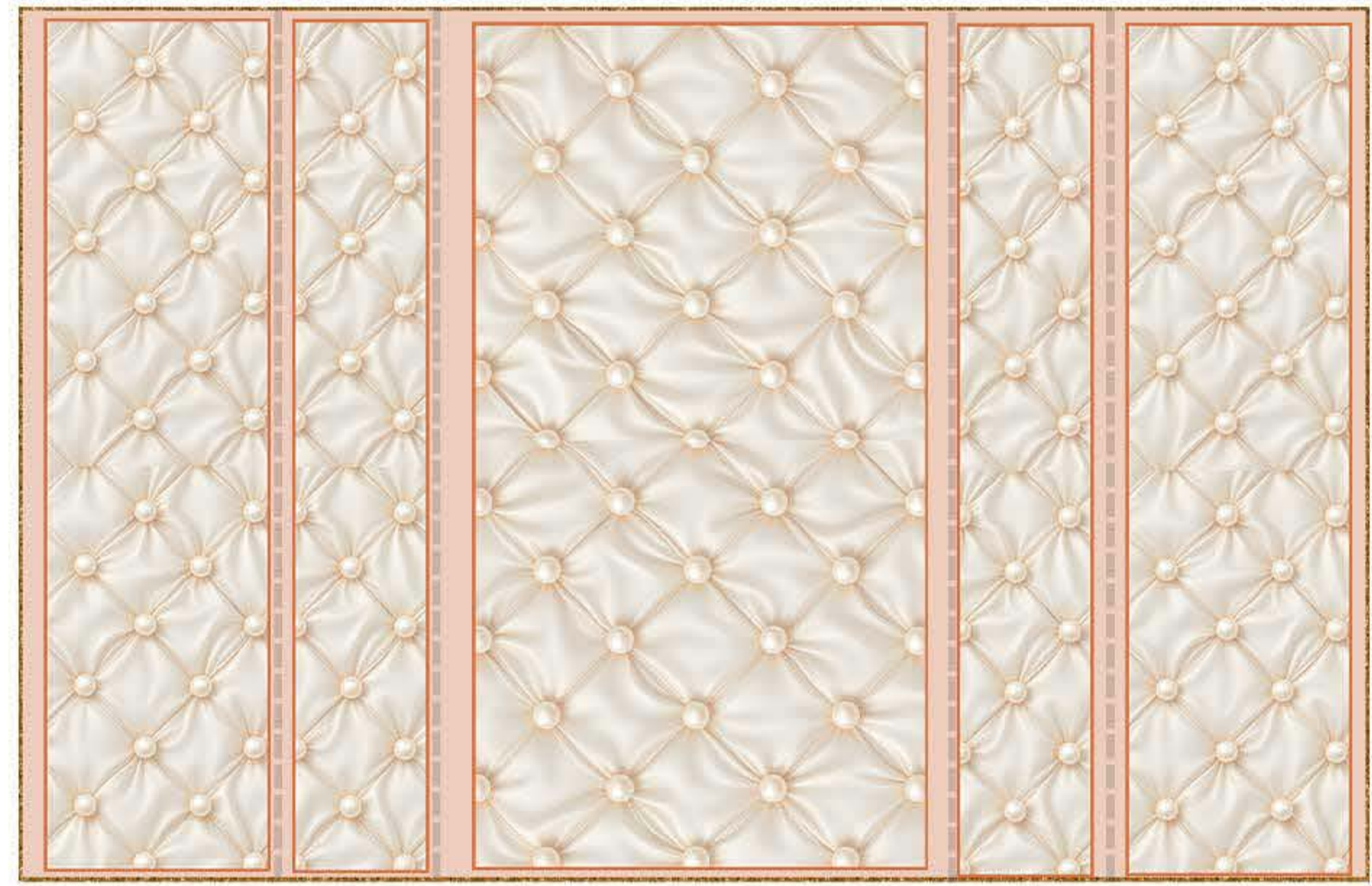
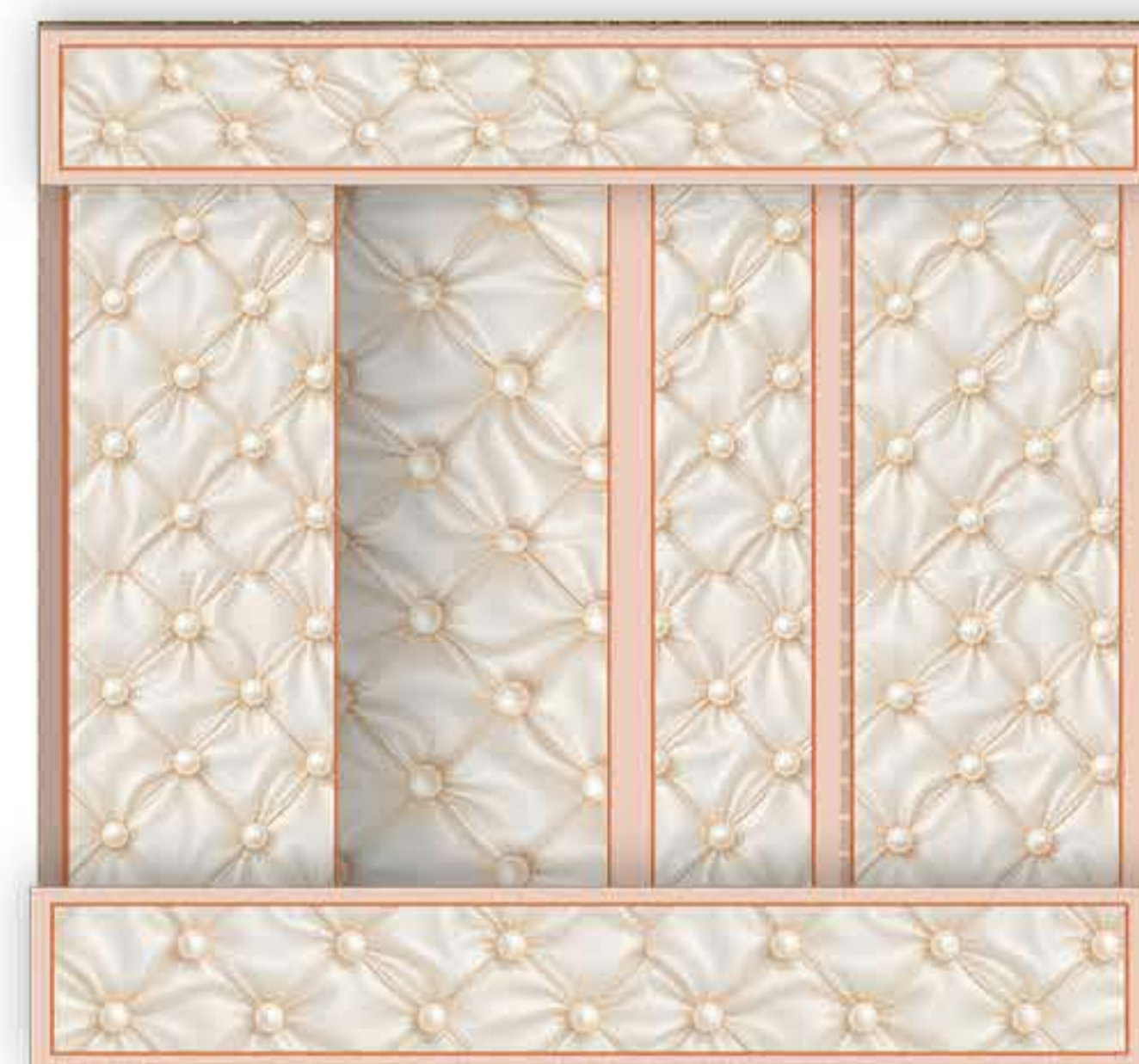


Fig 2.

Fold the left side of the card so it is flat (Fig 3) and glue the left side of Bottom and Top Panels and stick down. With the right side of the card extended and flat, Glue the right side of Panels



Fig 3.



Glue Glue



Finally sciore the inserts and glue inside the box shape and add elements.