

'Picture Pop Out' 3D Card Kit Tutorial (Pink Roses design shown)

by Sandie Burchell at <http://www.craftsuprint.com/sandie-burchell/>

Materials Required:

For main card:

4 Sheets A4/Letter Size 200gsm/110lbs Cardstock or Photo Paper.

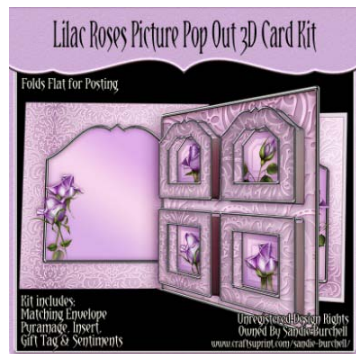
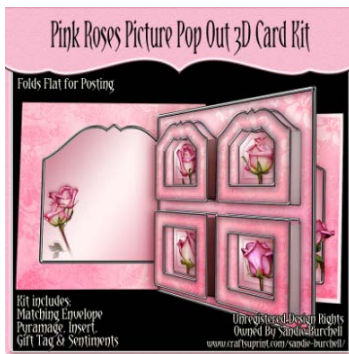
Craft Glue Stick or Double-sided tape

3d Sticky pads

For envelope:

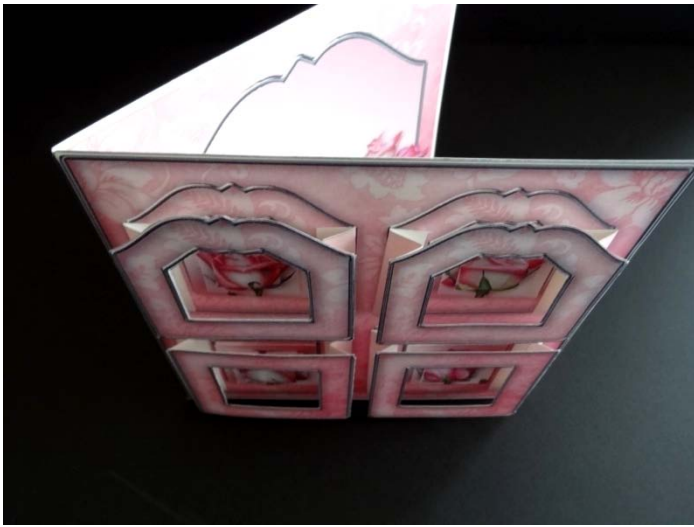
2 Sheets A4/Letter Size Cardstock or Thick Paper.

Double-sided Tape



Picture Pop Out 3D Card Kit





Birds Eye View from Front



Card Side View

CARD INSTRUCTIONS



Print on to 200gsm/110lbs Cardstock or 250gsm Photo Paper.

Cut out all the pieces including the decoupage.

Apply 3D Pads to the back of the pyramage pieces.



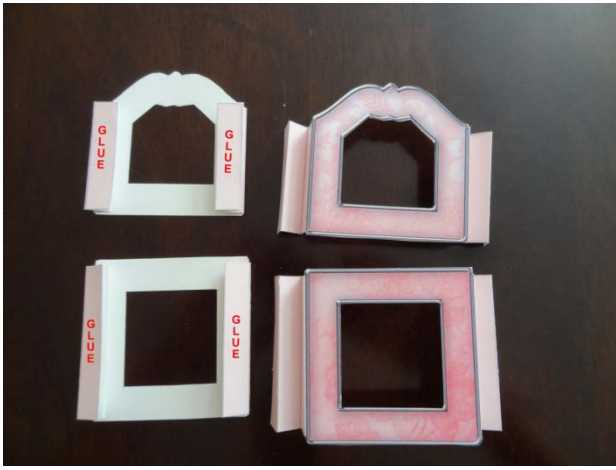
Layer in alphabetical order.



Apply the layered Pyramage to the front card with 3D Pads.



Score Mountain & Valley Folds as shown at left.



Make Folds. Use a bone folder to make the folds crisp. Photo at left shows 2 pieces from the front and 2 from the back. If you want to put acetate in the 'windows' you can do so at this point.



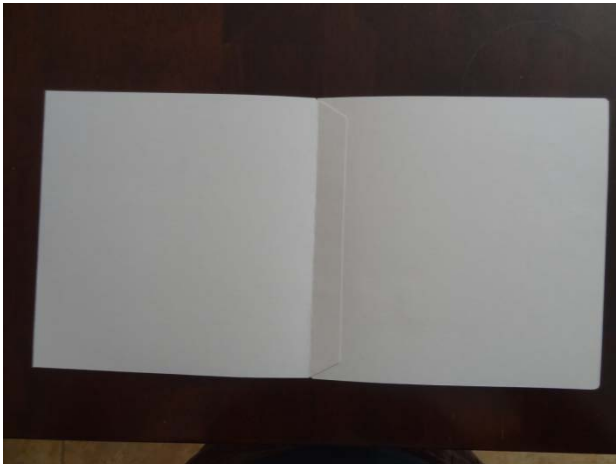
I always find concertina folds easier to work with if I use a paperclip to hold the folds together. Apply double-sided tape or glue to the top concertina (see mountain and valley fold diagram)



Apply concertina frames to the front of the card pressing down well before you remove the paperclips.



Score & Fold Front Card Flap. Use a bone folder to make crisp.



Apply double-sided tape or glue and attach front card to the back card. The join will be covered with the Insert.



Apply the Insert with Double-sided Tape.



Apply chosen sentiment to the Insert. Alternatively, you could put the sentiment on the back of the card.

ENVELOPE INSTRUCTIONS



Print on to Cardstock or Thick Paper.

Cut out the 2 envelope pieces.



Score and fold as shown. Use a bone folder to make crisp.



Apply double-sided tape to the bottom flap of the front envelope and join to the bottom edge of the back envelope, as shown. I usually put a piece of Sellotape over this join as this prevents the card, when it is put into the envelope, getting caught up on the join.



Apply double-sided tape on to the side flaps and fold front envelope up and over on to them. Press down well. Re-apply bone folder to folds to make crisp.



Apply double-sided tape to top flap and leave intact until you are ready to use.



Punch hole into Gift Tag (not shown). Optional: glue it on to card so that you have a card backing to write on. Thread Ribbon through the hole to finish.

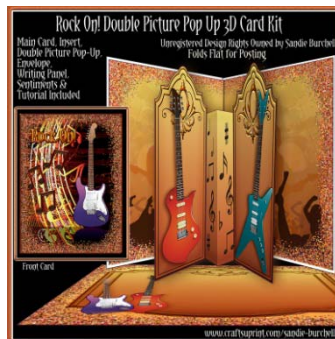
Stand back and admire your finished Card & Envelope. Card folds flat for posting.

I will be adding more Picture Pop Outs – so please keep checking at:
<http://www.craftsuprint.com/sandie-burchell/> for more designs.

©2010-2012 Sandie Burchell

Unregistered Design Rights Owned By Sandie Burchell

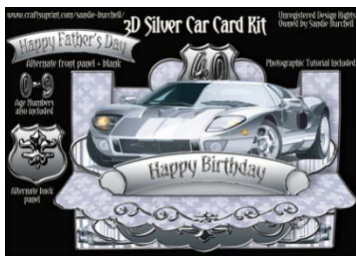
A few of my other original card kits available at CraftsUPrint – please click on the links below:



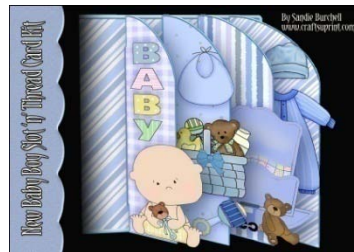
Double Picture Pop Up 3D Card Kit



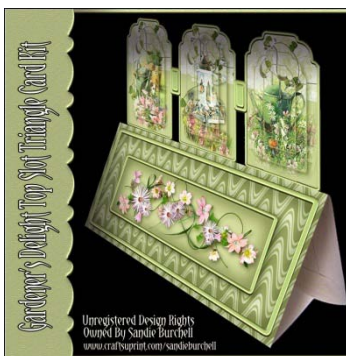
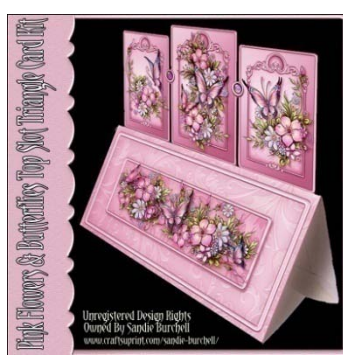
3 Panel Screen Card Kit



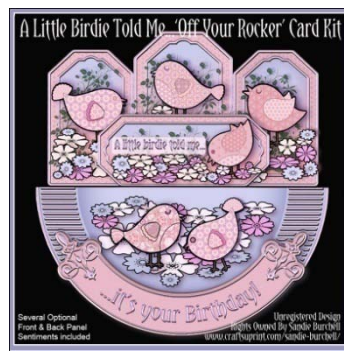
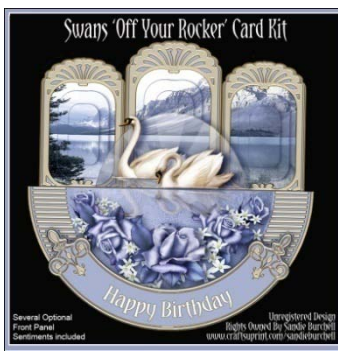
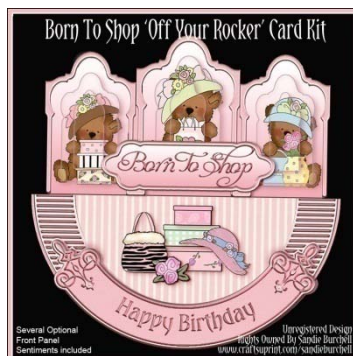
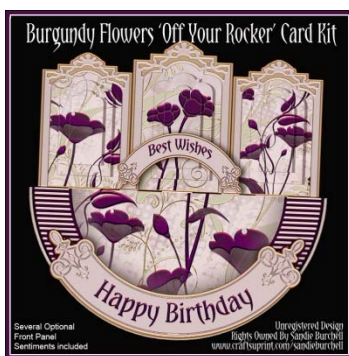
3D 'Shelf' Card Kits



Slot 'n' Thread Card Kits



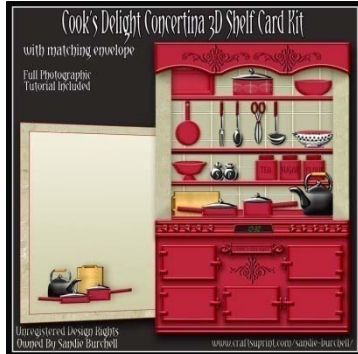
Top Slot Triangle Card Kits



Off Your Rocker Card Kits



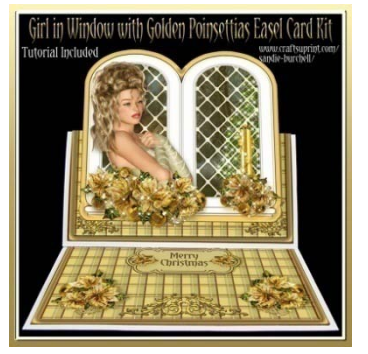
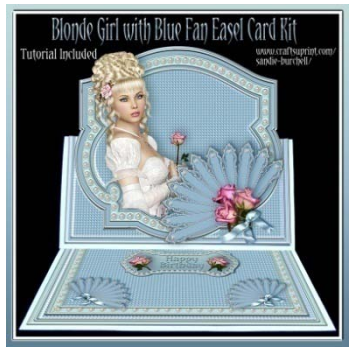
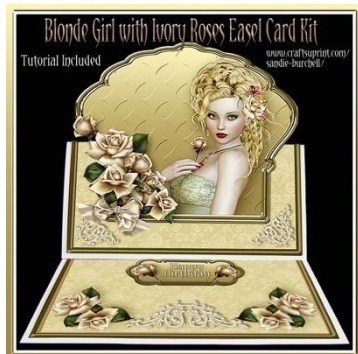
[Christmas Hanging Decorations Kits](#)



[Concertina Shelf Card Kits](#)



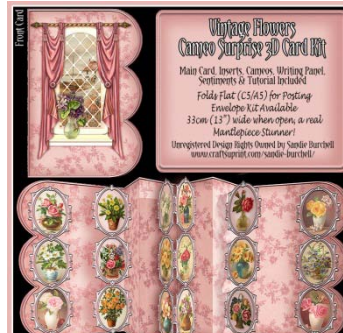
[Diamond Base 3D Card Kits](#)



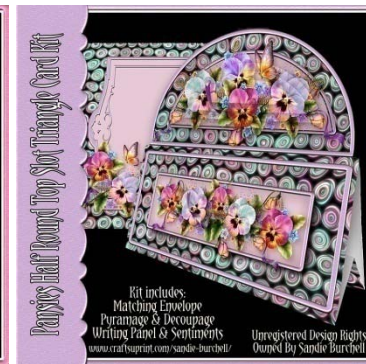
[Easel 8"x8" Card Kits](#)



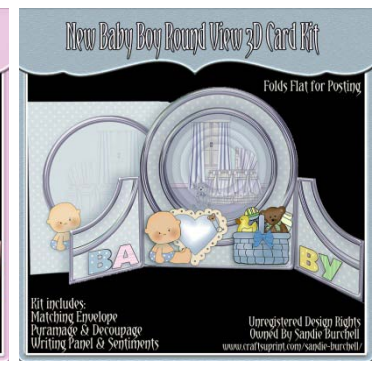
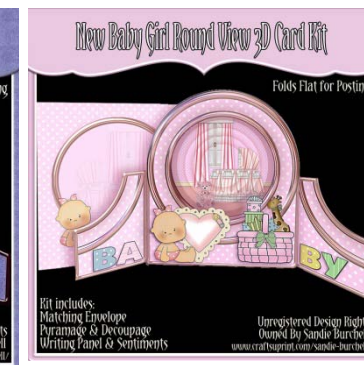
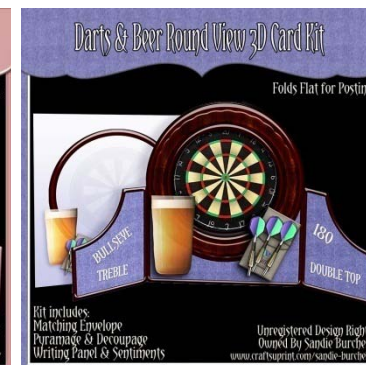
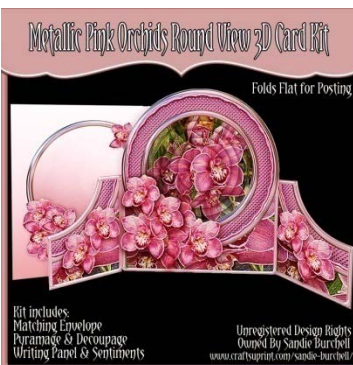
Pop Up 3D Card Kit



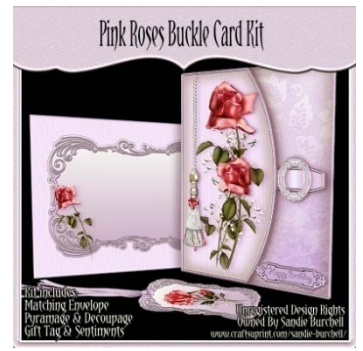
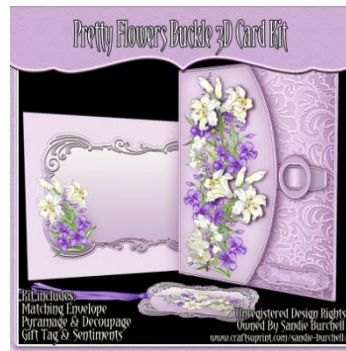
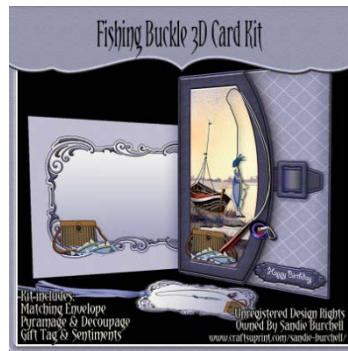
Cameo Surprise 3D Card Kit



Half Round Top Slot Triangle Card Kit



Round View 3D Card Kit



Buckle Card Kits



Frame It! 3D Frame Kits

Look out for Brand New Card Making Concepts coming soon!

<http://www.craftsuprint.com/sandie-burchell/>