

## HOW TO MAKE A SURPRISE CARD

1. Print out the backing design onto sturdy card. (I used 300 gsm)
2. Put this back into the printer and print out the sheet with the main gatefold card onto the reverse side. Take care to make sure you put your card back into the printer the right way so that the backing design will print out onto the back of your main card. It doesn't matter that there will be text on the back of your inserts because once the card is made you won't see this.

3. Print out the sheet with the decoupage - I used 230 gsm glossy photo card.
4. Print out the envelope onto paper.
5. Cut out the card pieces. I found it useful to use a craft knife and a metal ruler to first cut out the centre pieces - before I cut out the frames.

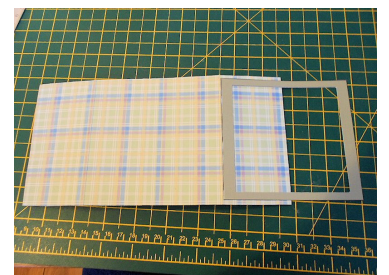


6. Score the dotted lines on the main gatefold card. Stick on the left and right inserts. I used foam pads but you could use glue or double sided tape (DST).
7. Fold the score lines and stick in your main insert onto the central panel of the main card.

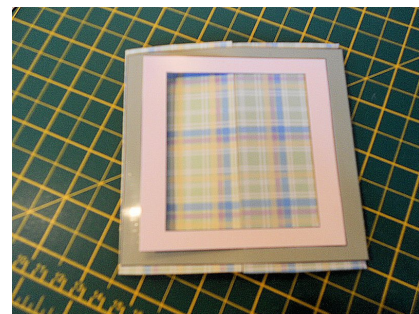


8. Shape your decoupage pieces by putting them face down on your thigh or a soft mouse mat or a folded towel and then with the rounded part of one side of a pair of scissors, (or the bowl of a teaspoon), rub in a circular motion until the edges curl up. Assemble your decoupage using foam pads, or silicon glue. Put to one side until glue dries.

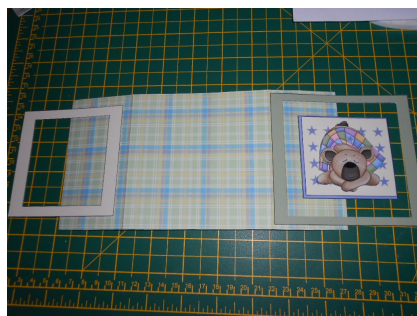
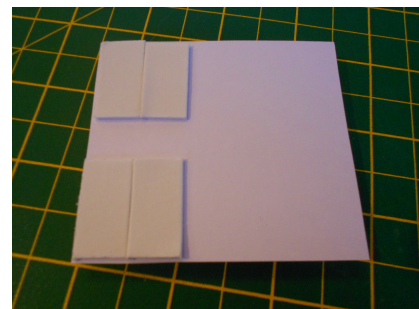
9. Take your Outer Frame (the largest); and centre it on top of your closed card. Stick the frame to the left side of the card only.



10. Take Frame 2, place it inside the Outer Frame (trim the edges a touch if necessary as these two frames need to move freely past each other when the card opens.) Stick this frame onto the right side of the gatefold card only.



11. Stick your topper onto the topper mat using DST, glue or foam pads. (I used pads). Stick your decoupage onto the topper.
12. Stick this whole item onto the front of your card, in the centre of the frames, sticking it onto the left side of the gatefold only. It doesn't matter if the right side overlaps the inner frame a little bit as a) it will help to keep the card closed and b) you won't notice once the card is standing up. (The first photo here just shows how I placed my foam pads). (The second photo shows how the card will look when it's opened out on your cutting mat).



13. Finish your card with your own embellishments like peel-offs, gems, ribbons, etc.
14. Assemble your envelope following the instructions on the envelope sheet.



I hope you enjoy making these "Surprise Cards".