

Tutorial for [Triangular Base Card Kit](#) (Roses and Butterflies design is shown in this tutorial)

Template Design by Sue Douglas, exclusively at

<http://www.craftsuprint.com/sue-douglas/>

These [Triangular Base Card Kit](#) designs are quick and easy to make, and the card folds flat for posting.

Included in each kit:

Triangular Base Card

A wide choice of sentiments for the Card Front

Large Gift Tag

Envelope

UK Finished Sizes when printing to *actual size* (see paragraph below on printing actual size):

Triangular Base Card	Height at tallest point	- 7 11/16in (19.6 cm)
	Width at widest point	- 6 1/2in (16.4 cm)
	Depth at Base	- 2 5/8in (6.6cm)

Gift Tag	Height	5in (12.7cm)
	Width	2 5/8in (6.7 cm)

Envelope (Flap not included)	Height	8 3/4 (22.2 cm)
---------------------------------	--------	-----------------

If your finished sizes are larger than the measurements above, the most likely cause, will be, that you are printing to media size (e.g. A4 size or Letter Size), rather than printing the sheets at actual size. Please see the notes at the end of this document, where I explain how you get your printer to print at **actual size**. N.B. You don't have to change the settings on the physical Printer, but when you send a document to your printer to print, it's the settings on the options box that appears on your PC screen that need to be set, to correctly print at actual size.

Materials Required:

Triangular Base Card and Gift Tag

4 sheets A4/Letter size of Photo Paper (160 - 200gsm)
2 sheets of plain cardstock, that co-ordinates with the design
(160 to 200gsm)

Envelope

2 sheets of A4/Letter size cardstock (120 to 160gsm)

N.B. This tutorial shows the photo paper being applied to a cardstock backing, to make the finished card sturdier, which will give the optimum results, for this design. However, you could try printing on to a heavier Photo Paper instead, which may remove the need to attach the Photo Paper to cardstock after printing, but I haven't tried it, and you may find that the base is not strong enough, to hold the weight of the card front, especially once the Decoupage layers have been applied.

Double-sided tape

3d Sticky Foam Pads or Silicon Glue/Glue Gel

8in – 9in (20.3cm – 22.8cm) Double-Sided Satin Ribbon, 15mm wide in a colour that co-ordinates with the design.

Roses & Butterflies



TRIANGULAR BASE CARD

Folds Flat
for Posting

A COLLECTION OF
BEAUTIFUL FRAMED
FLORAL LANDSCAPES



MATCHING
ENVELOPE

MATCHING
GIFT TAG

3D TRIANGULAR BASE KIT

Unregistered Design Rights owned by Sue Douglas

6 page kit Includes: Triangular Base Card; Matching
Envelope; Matching Gift Tag and a choice of Sentiments

Exclusive Design Purchased from www.CraftsUPrint.com/sue-douglas/

[Triangular Base Card Kit – Roses and Butterflies](#)



Print and Cut

Print on to the Photo Paper and Cardstock recommended above, and cut out all the pieces which are:

A Card Front

B Card Stand

C Card Back Panel (*for your own sentiments/greetings*)

D1 Sentiment Label for Card Front (*a choice of sentiment labels are included in the kit, alternatively use the blank sentiment label (D1) with your own peel-offs or stamps*)

D2 up to Dn Card Front Decoupage

(*where n is the total number of Decoupage pieces, for the design you are making*)

E Envelope Front

F Envelope Back

G Envelope Flap

H Gift Tag

H1 to Hn Gift Tag Decoupage

(*where n is the total number of Decoupage pieces, for the design you are making*)

Score and Fold

Score and Fold along the dotted lines on the following pieces:

B Card Stand (*all mountain folds apart from one which is shown left which is folded first as a mountain fold then folded back the other way to a valley fold*)

E Envelope Front (*all mountain folds*)

G Envelope Flap (*mountain fold*)

Burnish (i.e. press) along the folds with the back of your scissors or bone folder, to reinforce the folds.

KEY:

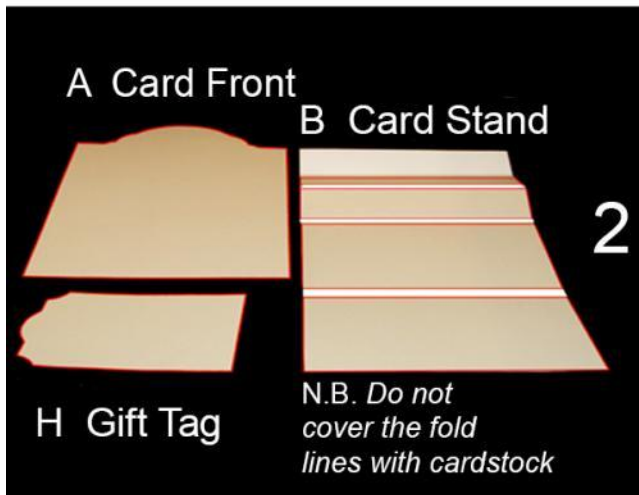
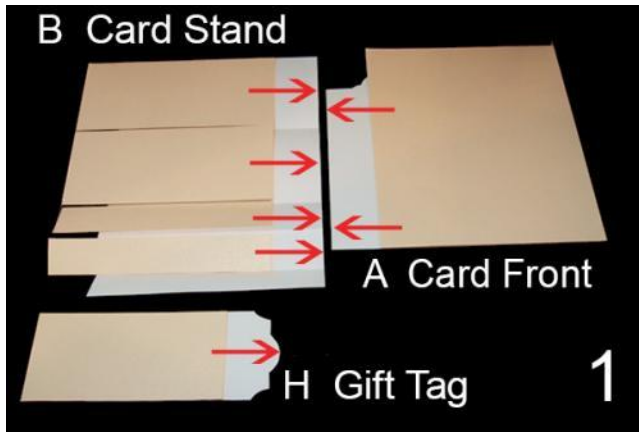
M = Mountain Fold

V = Valley Fold



M = Mountain Fold

V = Valley Fold



Cut out and apply backing card to the Photo Paper

This step shows the photo paper being applied to a cardstock backing, to make the finished card sturdier, which will give optimum results. However, you could try printing on a heavier Photo Paper instead, which may remove the need to attach the cardstock on to the back of the Photo Paper after printing. I haven't tried it, and you may find that the base is not strong enough to hold the weight of the card front without the added cardstock, especially once the Decoupage has been applied.

Cut out the backing cardstock (*this can be white, or a colour that co-ordinates with the design you are making*)

Apply double-sided tape to the back of the Card Front (A) and the Gift Tag (H), and apply on to a piece of cardstock. Cut around the cardstock by cutting around the Card Front (A) and the Gift Tag (H) completely.

To back the Card Stand (B) with the cardstock, you will need to mark and cut 4 sections of cardstock (the smallest glue box doesn't need to be backed with card), because it works much, much better, if you don't cover up the fold lines. Offer the cardstock up against the wrong side of your folded Card Stand (B), and mark where you need to cut each of the four pieces to be backed making sure that mark each piece excluding the fold lines (see Photo 1)

Cut the four pieces of cardstock that you have marked, and apply double-sided tape, to the back and apply to each section, again making sure that the fold lines are not covered. Photo 2, shows the finished results, I have highlighted the edge of each piece of cardstock in **RED**.

Apply the Decoupage

Choose your Sentiment Label (D1) and apply to the top of the Card Front (A), with 3d Foam Pads.

Apply the Decoupage (D2 to Dn (*where n is the total number of Decoupage pieces, for the design you are making*)) to the Card Front (A), with 3d Foam Pads or Silicon Glue/Glue Gel

Apply the Decoupage (H1 to Hn (*where n is the total number of Decoupage pieces, for the design you are making*)) to the Gift Tag (H), with 3d Foam Pads or Silicon Glue/Glue Gel



Apply Ribbon to the Gift Tag

For this step you will need 8in – 9in (20.3cm – 22.8cm) Double-Sided Satin Ribbon 15mm wide in a colour that co-ordinates with the design, for the Gift Tag (H)

Punch a hole in the top of the Gift Tag where marked.

Fold the ribbon in half, and from the front of the Gift Tag, thread through the folded edge of the ribbon through the hole making a loop, (see Photo 1)

Feed the ribbon ends back through the loop (see Photo 2)



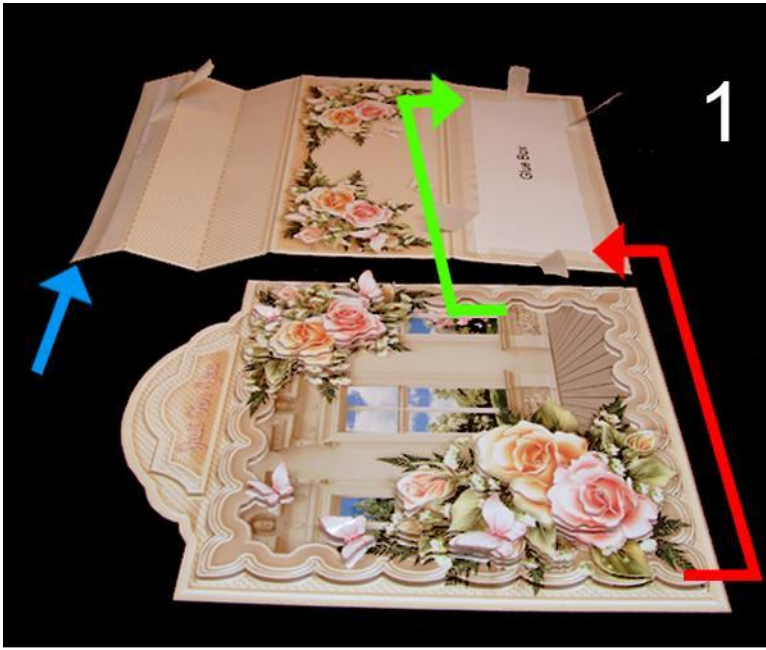
Pull the ends of the ribbon tight (see Photo 3).

The finished result.



Apply Card Front to Card Stand

Apply double-sided tape to the two glue boxes on the Card Stand (B) (photo 1)



Tip: If you are using a double-sided tape with a carrier tape, if you bend back just the end parts of the carrier tape (See Photo 1), you will be able to place the card front on top and if you don't quite get it, in the correct place, this method will allow you to remove it, and try again. Once you are happy with the position, press down the edges where the carrier has been removed and then carry on and remove the rest of the carrier tape. Obviously you do need to be able to get at the ends you have bent back, once the ends are stuck down, in order to be able to remove the rest of the carrier tape, and that's not always possible. For example, see the blue arrow left, where I have put two strips of tape on the small glue box, this method cannot be used on the piece of tape nearest to the edge, as that end, would end up inside the card stand, and it would be extremely difficult to remove the rest of the carrier tape! So in this case you don't have any option, but to remove the carrier tape completely! So the best option with that piece of tape, is to remove the carrier tape completely and to apply a wet glue (a glue stick is more cost effective for this, rather than using a more expensive wet glue), which will give you a little bit of time for movement, should you need it.

Place the bottom edge of the Card Front (A), to the bottom edge of the large glue box (see photos 1 & 2)



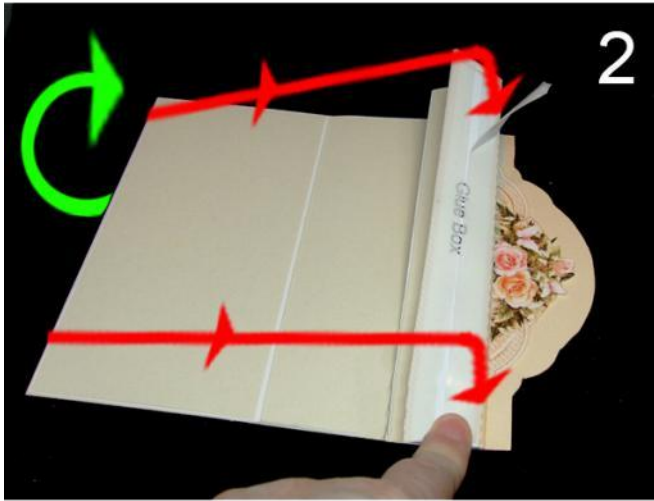
Once you are happy that you have it lined up correctly, press down on the ends where the carrier tape has been removed and then you can remove the rest of the carrier tape (see photo 3 (still shows one end of the carrier tape, to be removed))





Apply Card Back Panel

Using double-sided tape apply the Card Back panel to the top back of the card front as shown in photo 1 on the left.



Assemble the Card Stand

Concertina the bottom of the Card Stand (B) as shown in photo 2 on the left (you will need to remove the carrier completely, from the left most strip of double-sided tape, as explained earlier) Bring over the back portion of the stand (indicated by the arrows) so that it is lined up to the right hand fold of the Glue Box (see photo 2 left)

Remove the remaining strip of carrier tape.



The back view of the card front and card stand, is shown in photo 3



The card folds down flat for posting, as shown in photo 4 on the left.



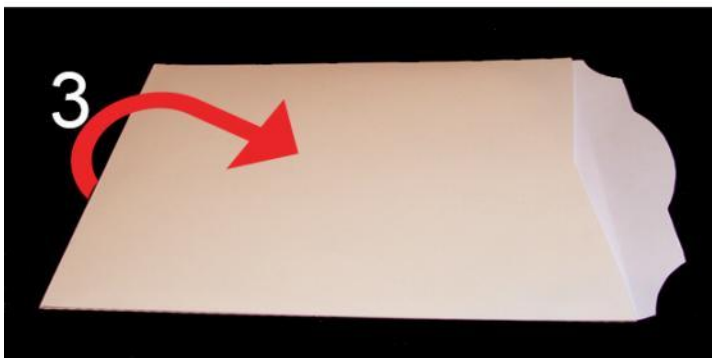
Assemble the Envelope

Add double-sided tape to all the glue boxes on the Envelope Front (E) and the Envelope Flap (G) as shown on the left in photo 1



Remove the carrier tape from the double sided tape on the bottom glue box on the Envelope Front (E). Apply the straight edge of the Envelope Back (F) on top of the double-sided tape. See Photo 2 left

Remove the carrier tape from the double sided tape on the glue box on the Envelope Flap (G) Attach the Envelope Flap (G) to the underside of the top edge of the Envelope Front (E) See Photo 2 left



Remove the carrier tape from the double sided tape on both of the side glue boxes on the Envelope Front (E).

Turn over the envelope so that the wrong side is facing upwards, with the side glue boxes folded over, towards the centre. Rotate the Envelope Back (F) over the side glue boxes and press down to secure. See photo 3 left.



Apply double-sided tape to the wrong side of the Envelope Flap edge, (leaving the carrier in place), or alternatively, apply a remoistenable envelope glue, to the Envelope Flap edge.

The finished envelope is shown in Photo 4 left

So that's it, all finished.



To see other designs in my Triangular Base Card Kit collection, please click on the link below:

[Triangular Base Card Kit Collection](#)

Original Template ©2013 Sue Douglas.

Roses and Butterflies is the design used in this tutorial

If you are pleased with your Triangular Base Card Kit, please take a look at the other designs available in this collection, below. There may be other designs available, that are not shown below, but just click on the link below the previews and you will be taken to CUP to see the full collection.

Template ©2013 Sue Douglas

<http://www.craftsuprint.com/sue-douglas/>



[Triangular Base Card Kit Collection](#)



[Triangular Base Card Kit Collection](#)

Colourful Petunias

Happy Birthday

TRIANGULAR BASE CARD

MATCHING ENVELOPE

MATCHING GIFT TAG

3D TRIANGULAR BASE KIT

Unregistered Design Rights owned by Sue Douglas
6 page kit Includes: Triangular Base Card, Matching Envelope, Matching Gift Tag and a choice of Sentiments

Folds Flat for Posting

A COLLECTION OF BEAUTIFUL FRAMED FLORAL LANDSCAPES

Exclusive Design Purchased from www.CraftsUPrint.com/sue-douglas/

Peach Roses, Lilac Flowers & Butterflies

Best Wishes

TRIANGULAR BASE CARD

MATCHING ENVELOPE

MATCHING GIFT TAG

3D TRIANGULAR BASE KIT

Unregistered Design Rights owned by Sue Douglas
6 page kit Includes: Triangular Base Card, Matching Envelope, Matching Gift Tag and a choice of Sentiments

Folds Flat for Posting

A COLLECTION OF BEAUTIFUL FRAMED FLORAL LANDSCAPES

Exclusive Design Purchased from www.CraftsUPrint.com/sue-douglas/

Triangular Base Card Kit Collection

Red Roses

With Love

TRIANGULAR BASE CARD

MATCHING ENVELOPE

MATCHING GIFT TAG

3D TRIANGULAR BASE KIT

Unregistered Design Rights owned by Sue Douglas
6 page kit Includes: Triangular Base Card, Matching Envelope, Matching Gift Tag and a choice of Sentiments

Folds Flat for Posting

A COLLECTION OF BEAUTIFUL FRAMED FLORAL LANDSCAPES

Exclusive Design Purchased from www.CraftsUPrint.com/sue-douglas/

Roses & Butterflies

Best Wishes

TRIANGULAR BASE CARD

MATCHING ENVELOPE

MATCHING GIFT TAG

3D TRIANGULAR BASE KIT

Unregistered Design Rights owned by Sue Douglas
6 page kit Includes: Triangular Base Card, Matching Envelope, Matching Gift Tag and a choice of Sentiments

Folds Flat for Posting

A COLLECTION OF BEAUTIFUL FRAMED FLORAL LANDSCAPES

Exclusive Design Purchased from www.CraftsUPrint.com/sue-douglas/

Triangular Base Card Kit Collection



[Triangular Base Card Kit Collection](#)

Please click on the links below, in order to see designs in my other collections, available to purchase at CraftsUPrint

Please click on the links below the photos to see all the designs in that particular collection

3d Room with a View Kit Down at the Local Pub

Unregistered Design Rights
owned by Sue Douglas

Back Text Plate and a
Range of Sentiments are Included

Pull the Slider Sides Apart to Reveal a
Free Standing 3d Room!
that Folds Flat
for Posting

Flattened View
Fits an 8in x 8in
Envelope

Exclusive Design Purchased from www.CraftsUPrint.com/sue-douglas/

3d Room with a View Kit Christmas Down at the Local Pub

Unregistered Design Rights
owned by Sue Douglas

Back Text Plate and a
Range of Sentiments are Included

Pull the Slider Sides Apart to Reveal a
Free Standing 3d Room!
that Folds Flat
for Posting

Flattened View
Fits an 8in x 8in
Envelope

Exclusive Design Purchased from www.CraftsUPrint.com/sue-douglas/

Left
Inside View
Right Inside
View

Left
Inside View
Right Inside
View

[3d Room with a View Kits](#)

3d Room with a View Kit Church Wedding

Unregistered Design Rights
owned by Sue Douglas

Back Text Plate & a
Range of Sentiments are Included

Pull the Slider Sides Apart to Reveal a
Free Standing 3d Room!
that Folds Flat
for Posting

Flattened View
Fits an 8in x 8in
Envelope

Exclusive Design Purchased from www.CraftsUPrint.com/sue-douglas/

3d Room with a View Kit Secret Garden

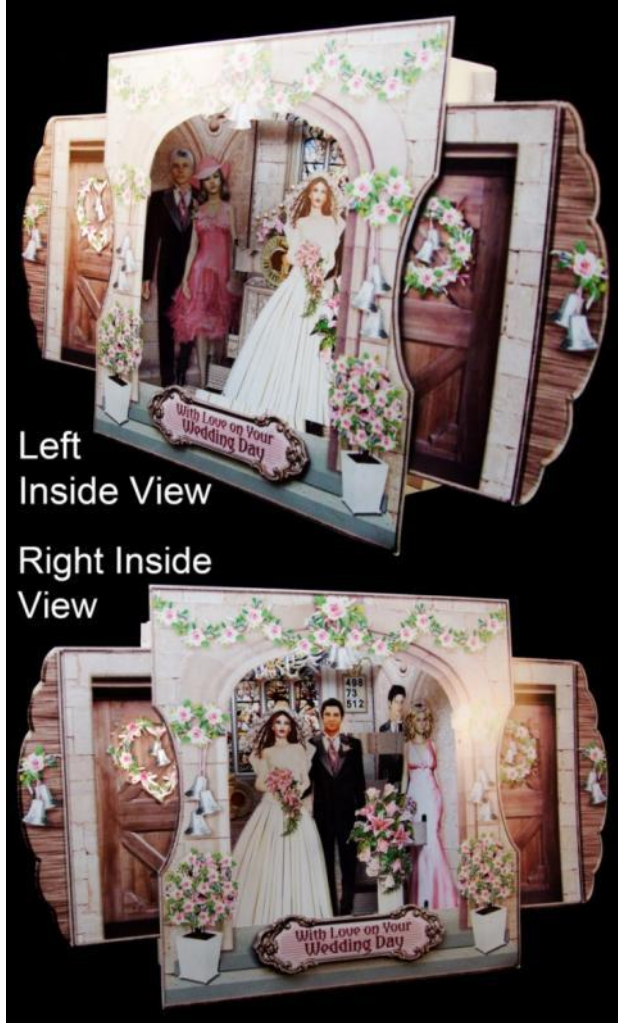
Unregistered Design Rights
owned by Sue Douglas

Back Text Plate & a
Range of Sentiments are Included

Pull the Slider Sides Apart to Reveal a
Free Standing 3d Room!
that Folds Flat
for Posting

Flattened View
Fits an 8in x 8in
Envelope

Exclusive Design Purchased from www.CraftsUPrint.com/sue-douglas/



[3d Room with a View Kits](#)

3d Room with a View Kit Gone for a Cuppa Garden Shed

Unregistered Design Rights
owned by Sue Douglas

Back Text Plate & a
Range of Sentiments are Included

Pull the Slider Sides Apart to Reveal a
Free Standing 3d Room!
that Folds Flat
for Posting

Flattened View
Fits an 8in x 8in
Envelope

Exclusive Design Purchased from www.CraftsUPrint.com/sue-douglas/

3d Room with a View Kit Pamper Yourself

Unregistered Design Rights
owned by Sue Douglas

Back Text Plate & a
Range of Sentiments are Included

Pull the Slider Sides Apart to Reveal a
Free Standing 3d Room!
that Folds Flat
for Posting

Flattened View
Fits an 8in x 8in
Envelope

Exclusive Design Purchased from www.CraftsUPrint.com/sue-douglas/

Left
Inside View

Right Inside
View

Left
Inside View

Right Inside
View

[3d Room with a View Kits](#)

3d Room with a View Kit Let's Rock!

Unregistered Design Rights
owned by Sue Douglas

Back Text Plate & a
Range of Sentiments are Included

Pull the Slider Sides Apart to Reveal a
Free Standing 3d Room!
that Folds Flat
for Posting

Flattened View
Fits an 8in x 8in
Envelope

Exclusive Design Purchased from www.CraftsUPrint.com/sue-douglas/

3d Room with a View Kit My Craft Room

Unregistered Design Rights
owned by Sue Douglas

Back Text Plate & a
Range of Sentiments are Included

Pull the Slider Sides Apart to Reveal a
Free Standing 3d Room!
that Folds Flat
for Posting

Flattened View
Fits an 8in x 8in
Envelope

Exclusive Design Purchased from www.CraftsUPrint.com/sue-douglas/

Left
Inside View
Right Inside
View

Left
Inside View
Right Inside
View

[3d Room with a View Kits](#)

3d Room with a View Kit
Sweet Dreams New Baby Girl

Unregistered Design Rights
owned by Sue Douglas

Back Text Plate & a
Range of Sentiments are Included

Pull the Slider Sides Apart to Reveal a
Free Standing 3d Room!
that Folds Flat
for Posting

Flattened View
Fits an 8in x 8in
Envelope

Exclusive Design Purchased from www.CraftsUPrint.com/sue-douglas/

3d Room with a View Kit
Sweet Dreams New Baby Boy

Unregistered Design Rights
owned by Sue Douglas

Back Text Plate & a
Range of Sentiments are Included

Pull the Slider Sides Apart to Reveal a
Free Standing 3d Room!
that Folds Flat
for Posting

Flattened View
Fits an 8in x 8in
Envelope

Exclusive Design Purchased from www.CraftsUPrint.com/sue-douglas/

Left
Side View

Right Side
View

Left
Inside View

Right Inside
View

[3d Room with a View Kits](#)

3d Room with a View Kit Vintage Music Room

Unregistered Design Rights
owned by Sue Douglas

Back Text Plate & a
Range of Sentiments are Included

Pull the Slider Sides Apart to Reveal a
Free Standing 3d Room!
that Folds Flat
for Posting

Flattened View
Fits an 8in x 8in
Envelope




Exclusive Design Purchased from www.CraftsUPrint.com/sue-douglas/

3d Room with a View Kit The Boudoir

Unregistered Design Rights
owned by Sue Douglas

Back Text Plate & a
Range of Sentiments are Included


Pull the Slider Sides Apart to Reveal a
Free Standing 3d Room!
that Folds Flat
for Posting

Flattened View
Fits an 8in x 8in
Envelope




Exclusive Design Purchased from www.CraftsUPrint.com/sue-douglas/

Left
Inside View
Right Inside
View



Left
Inside View
Right Inside
View






[3d Room with a View Kits](#)

3d Room with a View Kit Vintage Christmas

Unregistered Design Rights
owned by Sue Douglas

Back Text Plate & a
Range of Sentiments are Included

Pull the Slider Sides Apart to Reveal a
Free Standing 3d Room!
that Folds Flat
for Posting

Flattened View
Fits an 8in x 8in
Envelope




Exclusive Design Purchased from www.CraftsUPrint.com/sue-douglas/

3d Room with a View Kit Christmas at Home

Unregistered Design Rights
owned by Sue Douglas

Back Text Plate & a
Range of Sentiments are Included


Pull the Slider Sides Apart to Reveal a
Free Standing 3d Room!
that Folds Flat
for Posting

Flattened View
Fits an 8in x 8in
Envelope





Exclusive Design Purchased from www.CraftsUPrint.com/sue-douglas/

Left
Inside View
Right Inside
View



Left
Inside View
Right Inside
View



[3d Room with a View Kits](#)



[Gift Card / Money Envelopes Mini Kits](#)



[Gift Card / Money Envelopes Mini Kits](#)



[Gift Card / Money Envelopes Mini Kits](#)



[Gift Card / Money Envelopes Mini Kits](#)

Morning Glory

Unregistered Design Rights
owned by Sue Douglas

Exclusive Design Purchased from
www.CraftsUPrint.com/sue-douglas/

There are 6 pages in the kit and the following items
are included:
Hexagonal Cup and Saucer Pop-up, Tray Mat,
Tea Bag, Teaspoon, Card Front with Decoupage,
Card Back with Text Plate for your own greetings;
A range of Sentiments for the Card Front and the
Tea Bag
Folds flat for posting!



Time for Tea Pop-up Kit

Pansies with Polka Dots

Unregistered Design Rights
owned by Sue Douglas

Exclusive Design Purchased from
www.CraftsUPrint.com/sue-douglas/

There are 6 pages in the kit and the following items
are included:
Hexagonal Cup and Saucer Pop-up, Tray Mat,
Tea Bag, Teaspoon, Card Front with Decoupage,
Card Back with Text Plate for your own greetings;
A range of Sentiments for the Card Front and the
Tea Bag
Folds flat for posting!



Time for Tea Pop-up Kit

Time for Tea Pop-up Kits

Roses & Butterflies

Unregistered Design Rights
owned by Sue Douglas

Exclusive Design Purchased from
www.CraftsUPrint.com/sue-douglas/

There are 6 pages in the kit and the following items
are included:
Hexagonal Cup and Saucer Pop-up, Tray Mat,
Tea Bag, Teaspoon, Card Front with Decoupage,
Card Back with Text Plate for your own greetings;
A range of Sentiments for the Card Front and the
Tea Bag
Folds flat for posting!



Time for Tea Pop-up Kit

Spring Tulips & Butterflies

Unregistered Design Rights
owned by Sue Douglas

Exclusive Design Purchased from
www.CraftsUPrint.com/sue-douglas/

There are 6 pages in the kit and the following items
are included:
Hexagonal Cup and Saucer Pop-up, Tray Mat,
Tea Bag, Teaspoon, Card Front with Decoupage,
Card Back with Text Plate for your own greetings;
A range of Sentiments for the Card Front and the
Tea Bag
Folds flat for posting!



Time for Tea Pop-up Kit

Time for Tea Pop-up Kits

Pink Peonies & Butterflies
 Unregistered Design Rights owned by Sue Douglas
 Exclusive Design Purchased from www.CraftsUPrint.com/sue-douglas/


*There are 6 pages in the kit and the following items are included:
 Hexagonal Cup and Saucer Pop-up; Tray Mat; Tea Bag; Teaspoon; Card Front with Decoupage; Card Back with Text Plate for your own greetings; A range of Sentiments for the Card Front and the Tea Bag*
Folds flat for posting!



Time for Tea Pop-up Kit

Lilac Magnolias & Butterflies
 Unregistered Design Rights owned by Sue Douglas
 Exclusive Design Purchased from www.CraftsUPrint.com/sue-douglas/

*There are 6 pages in the kit and the following items are included:
 Hexagonal Cup and Saucer Pop-up; Tray Mat; Tea Bag; Teaspoon; Card Front with Decoupage; Card Back with Text Plate for your own greetings; A range of Sentiments for the Card Front and the Tea Bag*
Folds flat for posting!



Time for Tea Pop-up Kit

[Time for Tea Pop-up Kits](#)

Table Setting Mini Kit collection.

Table Setting Mini Kit
 Christmas Cracker with Gift Tag, Napkin Ring & Place Card
Candles
Cracker can also be used as a Gift Box



Unregistered Design Rights owned by Sue Douglas
 Exclusive Design Purchased from www.CraftsUPrint.com/sue-douglas/

Table Setting Mini Kit
 Christmas Cracker with Gift Tag, Napkin Ring & Place Card
Gold Bells & Holly
Cracker can also be used as a Gift Box



Unregistered Design Rights owned by Sue Douglas
 Exclusive Design Purchased from www.CraftsUPrint.com/sue-douglas/

[Table Setting Mini Kits](#)



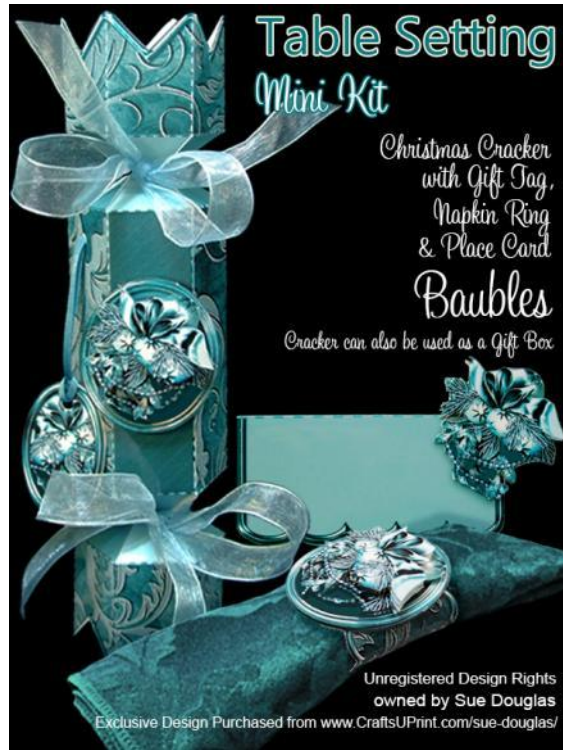
**Table Setting
Mini Kit**

Christmas Cracker
with Gift Tag,
Napkin Ring
& Place Card

Pine Cones

Cracker can also be used as a Gift Box

Unregistered Design Rights
owned by Sue Douglas
Exclusive Design Purchased from www.CraftsUPrint.com/sue-douglas/



**Table Setting
Mini Kit**

Christmas Cracker
with Gift Tag,
Napkin Ring
& Place Card

Baubles

Cracker can also be used as a Gift Box

Unregistered Design Rights
owned by Sue Douglas
Exclusive Design Purchased from www.CraftsUPrint.com/sue-douglas/

[Table Setting Mini Kits](#)



**Table Setting
Mini Kit**

Christmas Cracker
with Gift Tag,
Napkin Ring
& Place Card

Red Poinsettias

Cracker can also be used as a Gift Box

Unregistered Design Rights
owned by Sue Douglas
Exclusive Design Purchased from www.CraftsUPrint.com/sue-douglas/



**Table Setting
Mini Kit**

Cracker with Gift Tag,
Napkin Ring
& Place Card

New Year

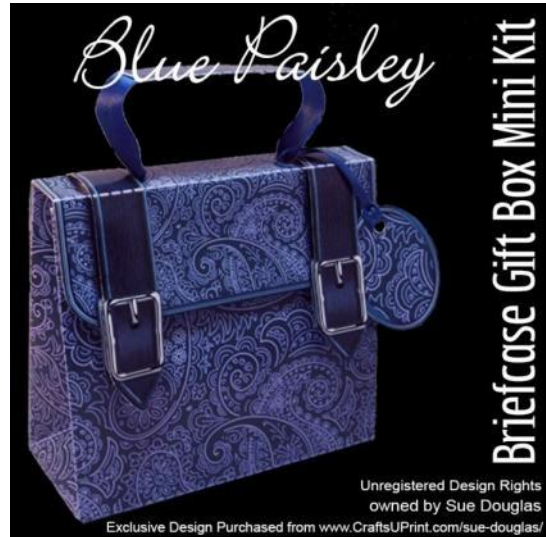
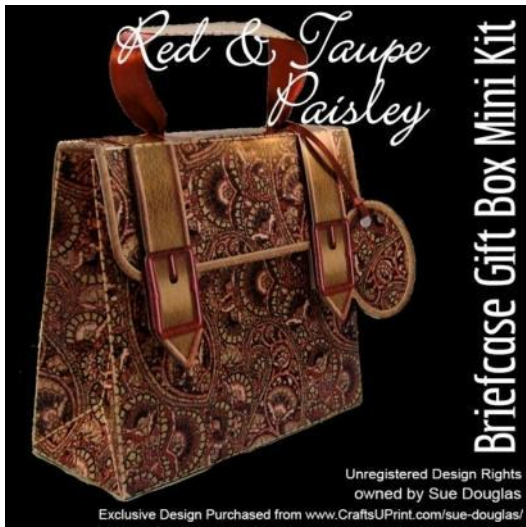
Cracker can also be used as a Gift Box

Unregistered Design Rights
owned by Sue Douglas
Exclusive Design Purchased from www.CraftsUPrint.com/sue-douglas/

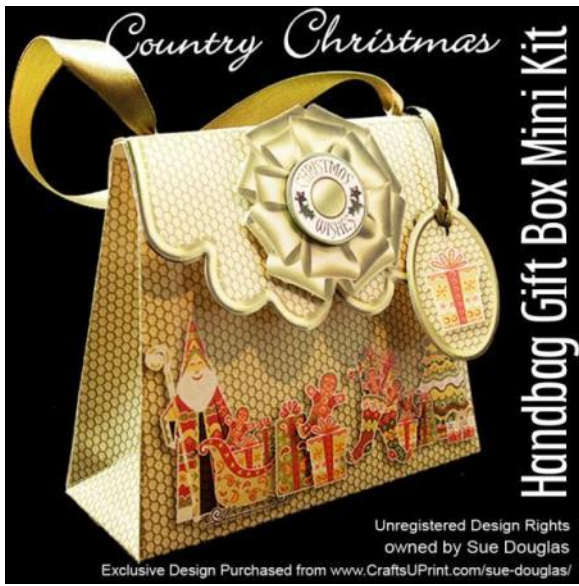
[Table Setting Mini Kits](#)



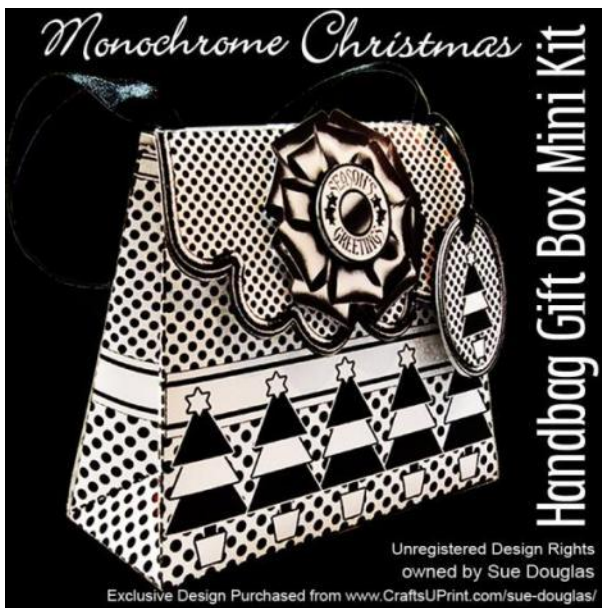
[Table Setting Mini Kits](#)



[Briefcase Gift Boxes](#)



[Handbag Gift Boxes](#)



[Handbag Gift Boxes](#)



Handbag Gift Boxes



Handbag Gift Boxes

Floral Surprise Kit
Lilac & Pink Pansies

Top View

Unregistered Design Rights owned by Sue Douglas

Also an Envelope, Back Text Plate a range of Sentiment Panels are included

An original 3d Design that Folds Flat for Posting

Matching Envelope

Just For You

Exclusive Design Purchased from www.CraftsUPrint.com/sue-douglas/

Floral Surprise Kit
Pink & Peach Roses

Top View

Unregistered Design Rights owned by Sue Douglas

Also an Envelope, Back Text Plate a range of Sentiment Panels are included

An original 3d Design that Folds Flat for Posting

Matching Envelope

Just For You

Exclusive Design Purchased from www.CraftsUPrint.com/sue-douglas/

[Floral Surprise Card Kits](#)

Floral Surprise Kit
Golden Poinsettias

Top View

Unregistered Design Rights owned by Sue Douglas

Also an Envelope, Back Text Plate a range of Sentiment Panels are included

An original 3d Design that Folds Flat for Posting

Matching Envelope

Merry Christmas

Exclusive Design Purchased from www.CraftsUPrint.com/sue-douglas/

Floral Surprise Kit
Pink Roses & Butterflies

Top View

Unregistered Design Rights owned by Sue Douglas

Also an Envelope, Back Text Plate a range of Sentiment Panels are included

An original 3d Design that Folds Flat for Posting

Matching Envelope

Happy Birthday

Exclusive Design Purchased from www.CraftsUPrint.com/sue-douglas/

[Floral Surprise Card Kits](#)



[Plate Card Kits](#)



[Plate Card Kits](#)



[Acetate Window Card Kits](#)



[Stationery Gift Sets](#)



[8in x 8in Easel Card Kits](#)



[Gift Card Money Envelope Kits](#)



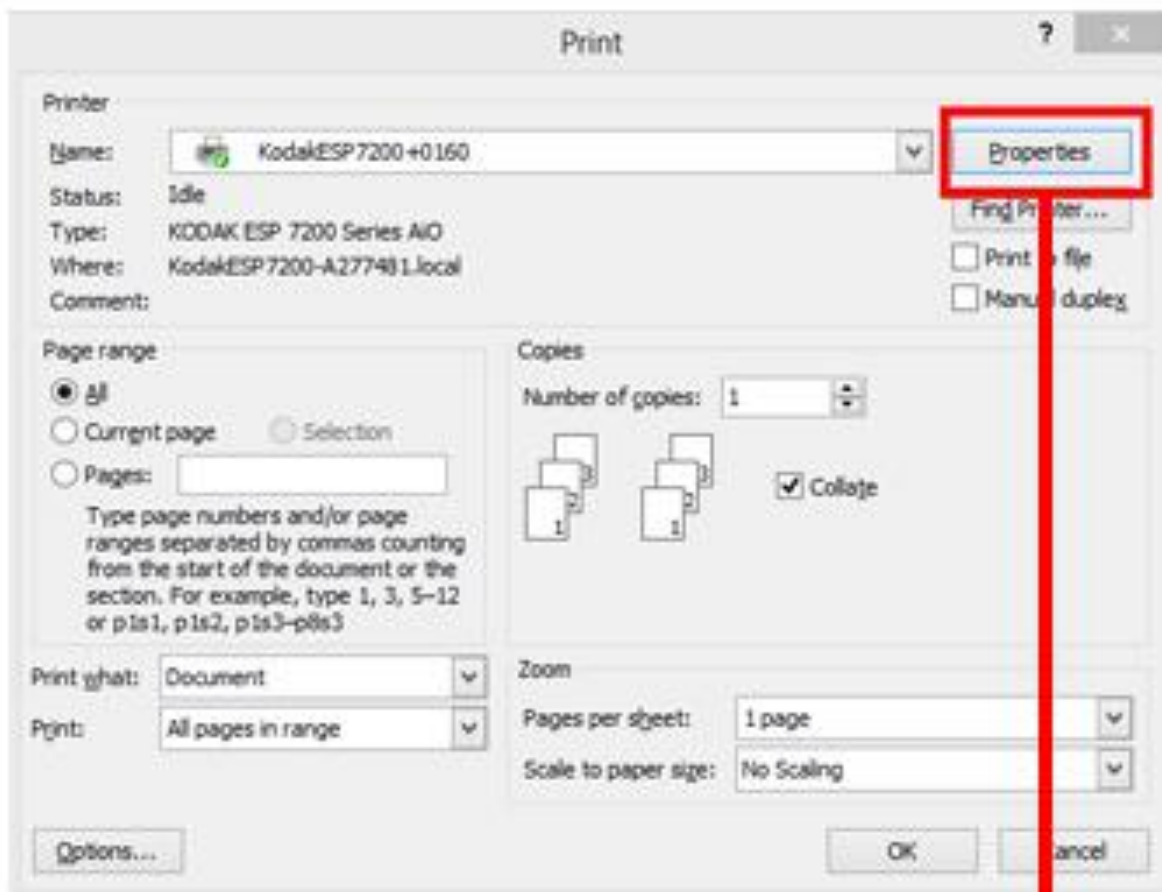
[Gift Card Money Envelope Kits](#)

Printer Settings for CUP sheets

Please note that the measurements / Card Blank sizes in this tutorial are correct sizes, providing you print the sheets with your printer settings set to 'Actual Size', rather than 'Fit to Media', which some of my customers seem to be doing. The effect of printing CUP sheets with the 'Fit to Media' setting, will cause the sheets to print out larger than the design size actually is, and larger than the designer intended, and you will most likely (certainly with my designs!), have to cut into the Card Front design to get it to fit! So if that's happening to you, please see details below of how to correct this problem, which is simple to fix, so that when I say in my instructions that the design tutorials that the design will fit a specific Card Blank size, it will fit, and you won't have to cut into the card front design to make it fit, because your settings have printed it out too big! The fault is with a setting you are using on your printer at the time when you send a sheet to your printer to print. Here are the settings that I use on my printer, when sending CUP sheets to my printer. The screen shots below may be different on your printer, in respect of the layout and the terms that are used, and the software that you use to print, but I don't think you should have any problems seeing what the equivalent terms being used on your own printer are.

You don't need to do anything on the actual printer, provided when you print your CUP sheets you go through the Printer dialogue box (Press CTRL & P together, on your keyboard to bring up the Print Box)

Continued on next page



Click on the Property Button

Continued on next page

KodakESP7200+0160 Document Properties

General **Layout** Advanced

Display preview before printing

My preferences: Current Preference

Print quality

Photo paper: Photo quality is automatically selected when printing on photo paper.

For non-photo paper:

Draft

Normal

Best

Paper size

A4 Custom...

Borderless

Paper tray

Auto Select

Orientation

Portrait

Landscape

Copies

1

Print last page first

Collate pages

297 by 210 mm.

Copies: 1

Layout: Normal

Two-sided: No

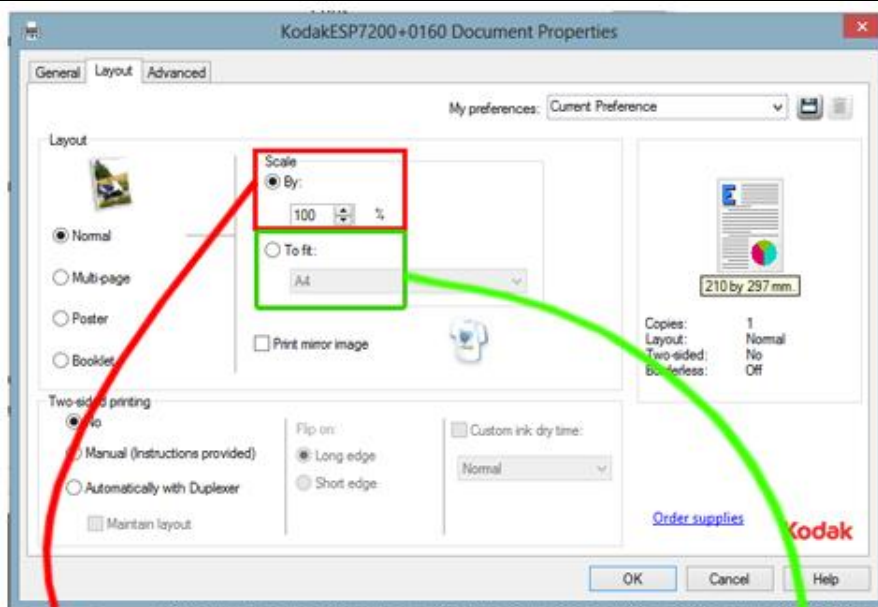
Borderless: Off

[Order supplies](#)

Kodak

OK Cancel Help

Click on the Layout Tab



This 'Scale' option is checked/ticked which shows that I print any CUP sheets at their 'Actual Size' i.e.100%

You will see that this 'To Fit A4' option, (i.e. the equivalent to 'Fit to Media') is not checked / ticked on my settings above. If it was, then because a CUP sheet has a printable area, which is less than A4, the effect of checking / ticking this option will increase the printable area to A4 and the sheet will be printed in a size larger than the designer intended.

This 'Scale' option is checked/ticked, which shows that I print any CUP sheets at their 'Actual Size' i.e.100%

You will see that this 'To Fit A4' option, (i.e. 'Fit to Media') You will see that this 'To Fit A4' option, (i.e. the equivalent to 'Fit

To Media') is not checked / ticked on my settings above. If it was, then because a CUP sheet has a printable area, which is less than A4, the effect of checking / ticking this option will increase the printable area to A4 and the sheet will be printed In a size larger than the designer intended. If it is on yours, (N.B the term used on your printer may be called something different, but it will have the meaning of 'Fit to Media' (i.e. Fit to A4 (or Letter size in the US)), then you may find that you have to cut into the printed design on my card fronts (and other designers card fronts), in order for them to fit on the card blanks that I, and other designers, indicate the size the sheets are designed for. In actual fact, when you print my designs at the correct setting of Actual size, there will ALWAYS be a small margin around my card fronts when you apply them to the card blank size I have instructed, if there isn't, or you have to cut into my card front design to make it fit the card blank, then you are printing as 'Fit To Media' instead of printing to 'Actual Size' which is the correct setting for it to fit on the card blank size, I say it is for. The reason for this, is because on CUP sheets the printable area, we have to design with, is smaller than A4, so that every printer that each customer may have (including international paper

sizes), will easily be able to print the sheets without any clipping occurring. If the printable area at CUP was A4 then there would be problems if the customer had a printer that wasn't able to print borderless A4 prints, and also those international customers who print on paper sizes that are different sizes to A4 (such as Letter Size which is the paper size that is used in the US)

Once you change this setting to 'Actual Size', or the equivalent term used on your printer. I have a Kodak printer, and my printer setting to print to actual size is called 'Scale' and the percentage I have set against it is 100%. I hope that helps...